

NW 29 29 22

FROM THE OFFICE OF

# CHARLES O. GEORGI COMPANY

2215 West County Road B

Saint Paul, Minnesota 55113

REGISTERED CIVIL ENGINEER AND LAND SURVEYOR



## Certificate of Survey

I Hereby Certify that this plat shows a survey made by me of the property described on this plat, and that the corners are correctly placed as shown, and that all locations have been correctly shown.

Surveyed For Robert McKenna

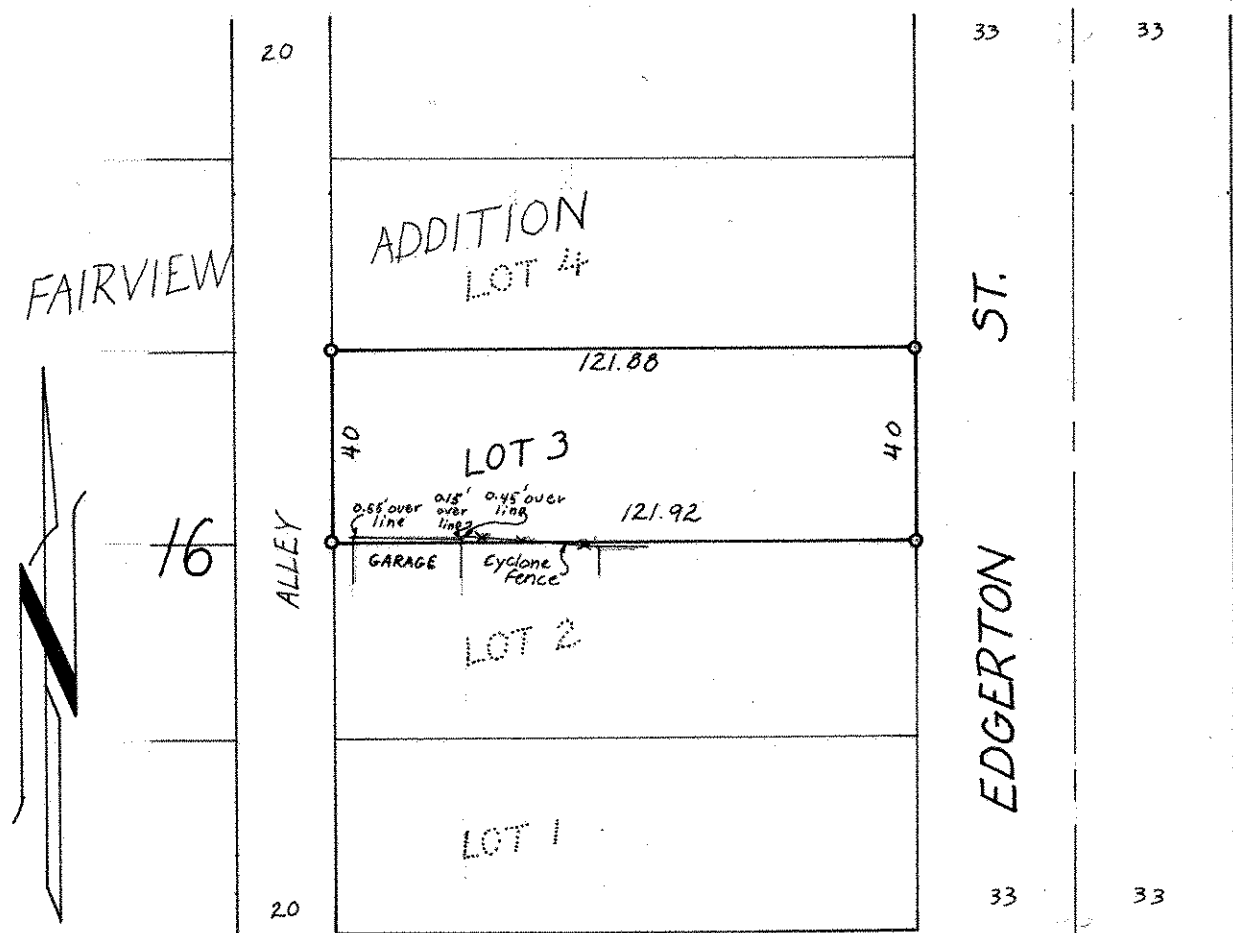
Date April, 1971

Scale 1" = 40'

By Charles O. Georgi  
REGISTERED LAND SURVEYOR

**Description:**

Lot 3, Block 16, Fairview Addition,  
Ramsey County, Minnesota.



CASE

AVE.

o Denotes Iron Pipe Monument  
Surveyed in accordance with Standard Survey  
Case Ave. varies in width.

South line of NW 1/4, Section 29  
T29N, R22W

45.45  
29.03