

FROM THE OFFICE OF

CHARLES O. GEORGI COMPANY

2215 West County Road B

Saint Paul 13, Minnesota

REGISTERED CIVIL ENGINEER AND LAND SURVEYOR

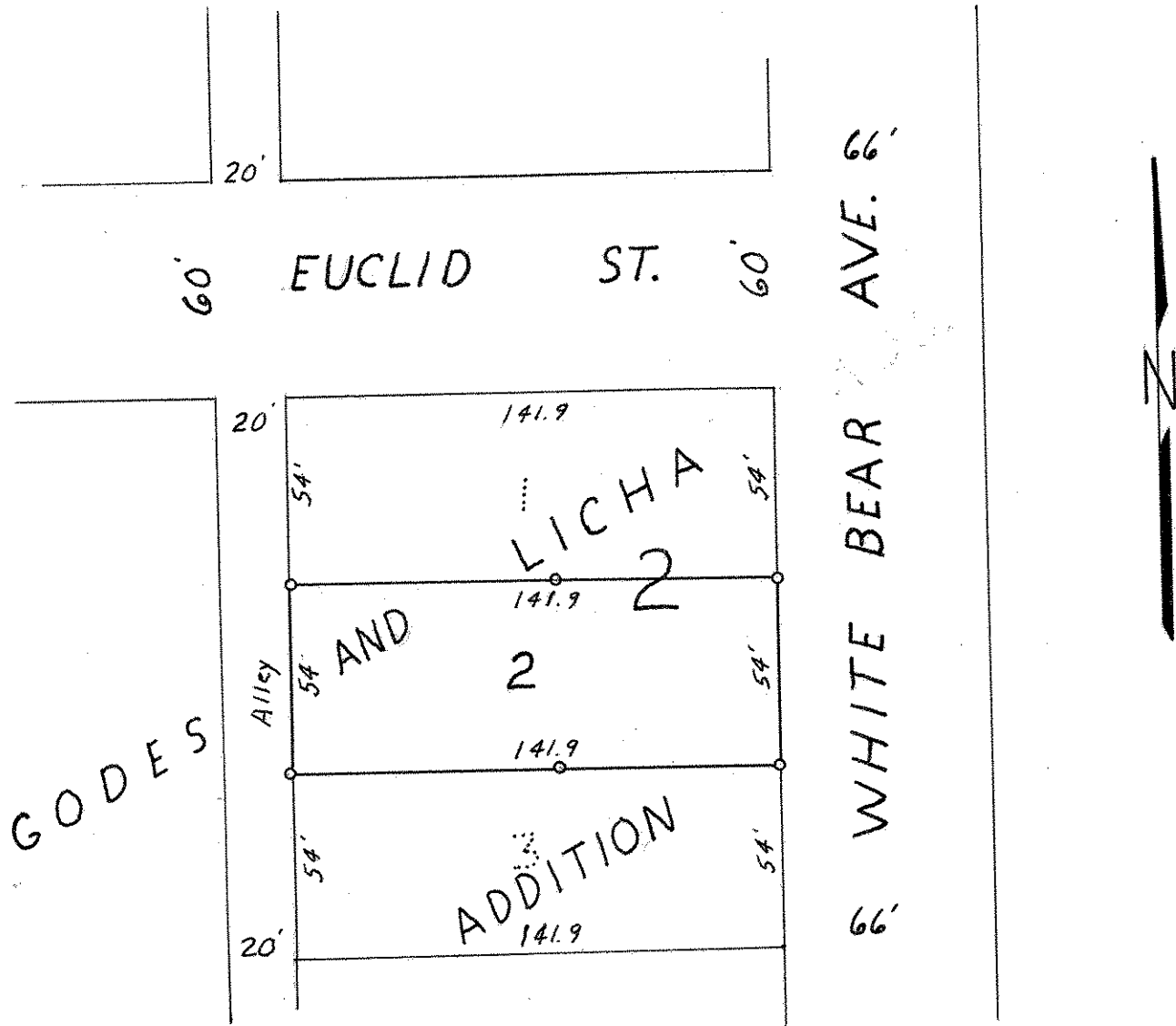
Certificate of Survey

I Hereby Certify that this plat shows a survey made by me of the property described on this plat, and that the corners are correctly placed as shown, and that all locations have been correctly shown.

Surveyed For *John Merthan*
Date *MAY 1963*
Scale *1" = 50'*

By *Charles O. Georgi*
REGISTERED LAND SURVEYOR

Description: Lot 2
Block 2
Godes and Licha Addition



o Denotes Iron Monument