

FROM THE OFFICE OF

CHARLES O. GEORGI COMPANY

2215 West County Road B

Saint Paul, Minnesota 55113

REGISTERED CIVIL ENGINEER AND LAND SURVEYOR

Certificate of Survey

I Hereby Certify that this plat shows a survey made by me of the property described on this plat, and that the corners are correctly placed as shown, and that all locations have been correctly shown.

Surveyed For *T. Montez...*

Date *December 1969*

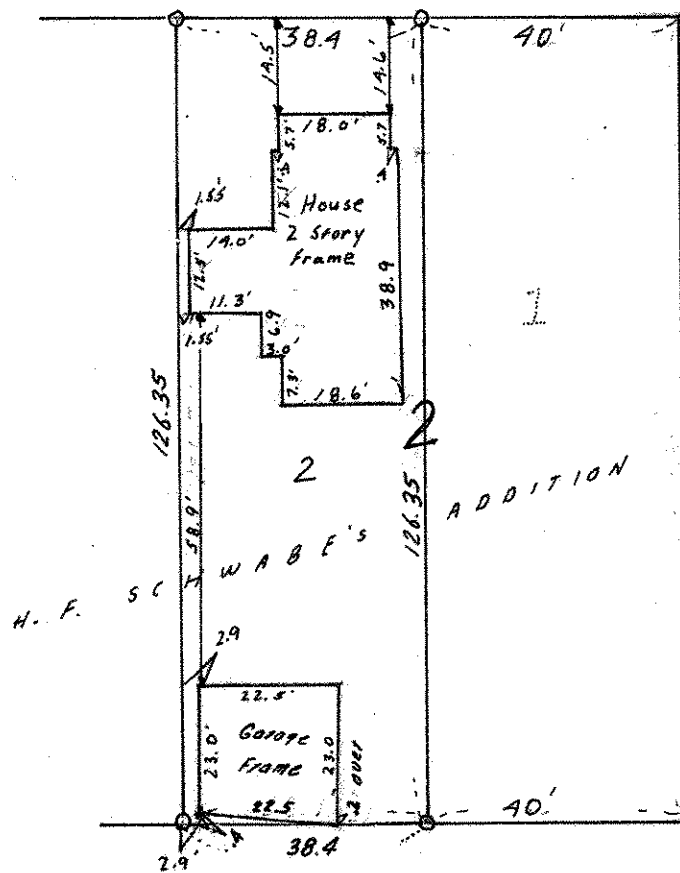
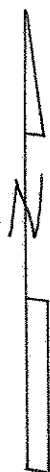
Scale *1" = 30'*

By *Charles O. Georgi*
REGISTERED LAND SURVEYOR

Description:

*Lot 2,
Block 2,
H. F. Schwabe's Addition
Ramsey County Minn.*

EUCLID ST.



FRANK ST.
(Not Graded)

○ Denotes Iron Monument