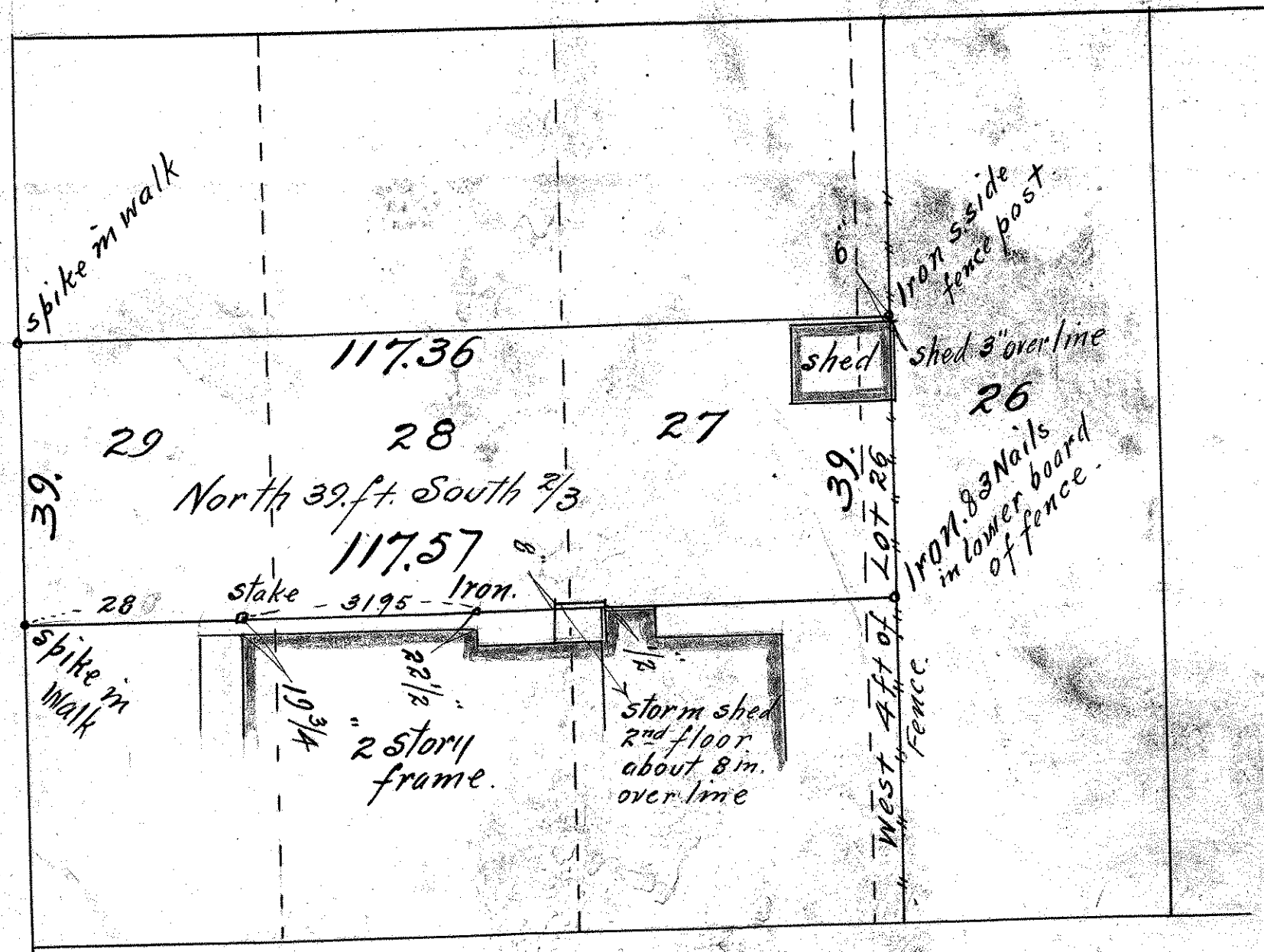


N. 39 ft. of S. $\frac{2}{3}$ of WEST 4 ft. of LOT 26 &
 N. 39 ft. of S. $\frac{2}{3}$ of LOTS 27, 28 & 29.
 W. GRUBE'S SUB'DN OF
 BLOCK 104
 LYMAN DAYTON'S ADD.

JOHN B. IRVINE, SURVEYOR.
 408 GLOBE BLDG.
 ST. PAUL, MINN.
 APRIL 1-1910.
 SCALE 20 ft. per inch.

ALLEY. 20

ARCADIE ST.



E. SIXTH ST.

APRIL 1910