

FROM THE OFFICE OF

# CHARLES O. GEORGI COMPANY

2215 West County Road B

Saint Paul 13, Minnesota

REGISTERED CIVIL ENGINEER AND LAND SURVEYOR

## Certificate of Survey

I Hereby Certify that this plat shows a survey made by me of the property described on this plat, and that the corners are correctly placed as shown, and that all locations have been correctly shown.

Surveyed For J. Lynde - AAA House MOVERS.

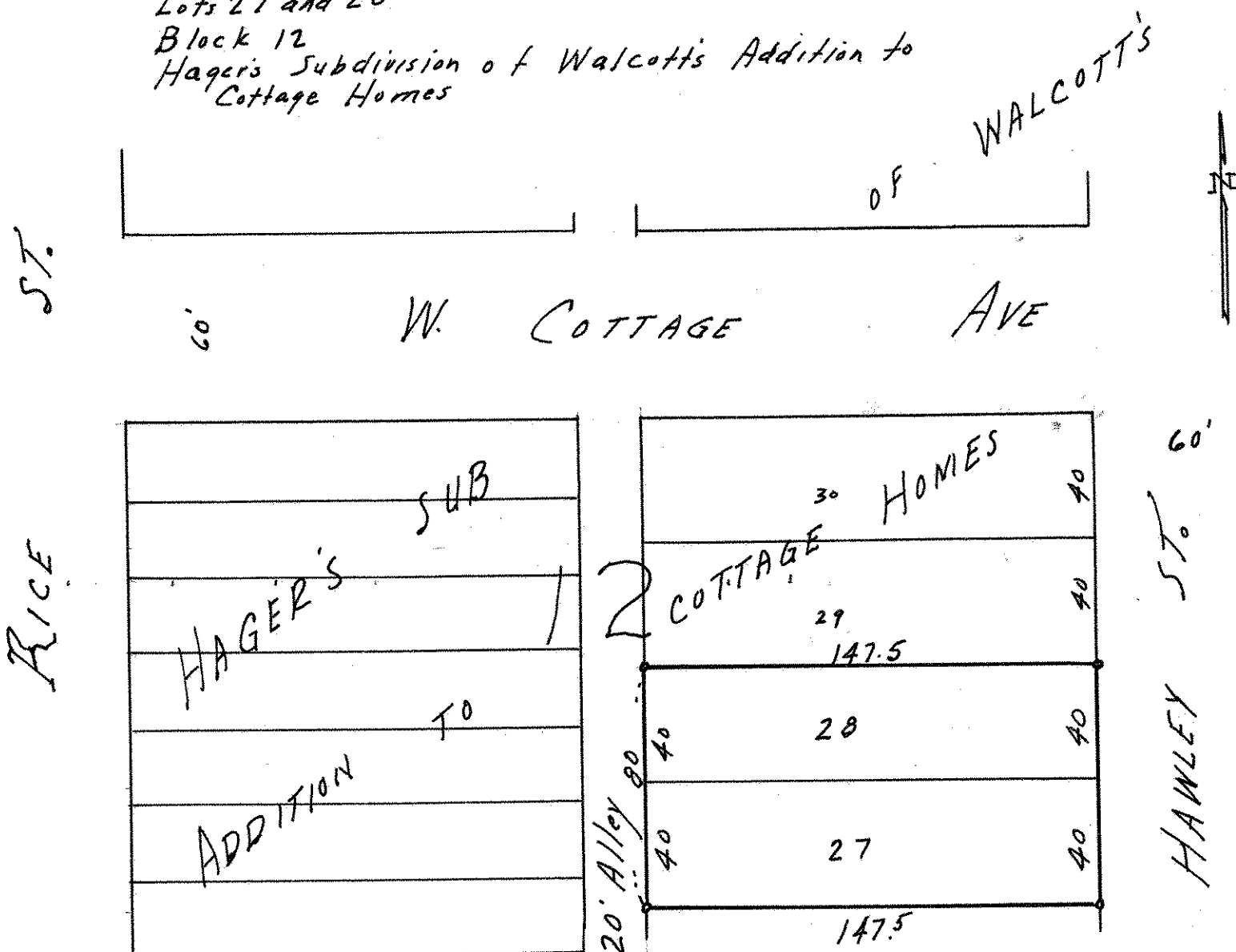
Date May 8, 1963

Scale 1" = 50'

By Charles O. Georgi  
REGISTERED LAND SURVEYOR

Description:

Lots 27 and 28  
Block 12  
Hager's Subdivision of Walcott's Addition to  
Cottage Homes



o Denotes Iron Monument.