

FROM THE OFFICE OF

CHARLES O. GEORGI COMPANY

2215 West County Road B

Saint Paul, Minnesota 55113

REGISTERED CIVIL ENGINEER AND LAND SURVEYOR



I Hereby Certify that this plat shows a survey made by me of the property described on this plat, and that the corners are correctly placed as shown, and that all locations have been correctly shown.

Surveyed For ROBERT ZIERDEN

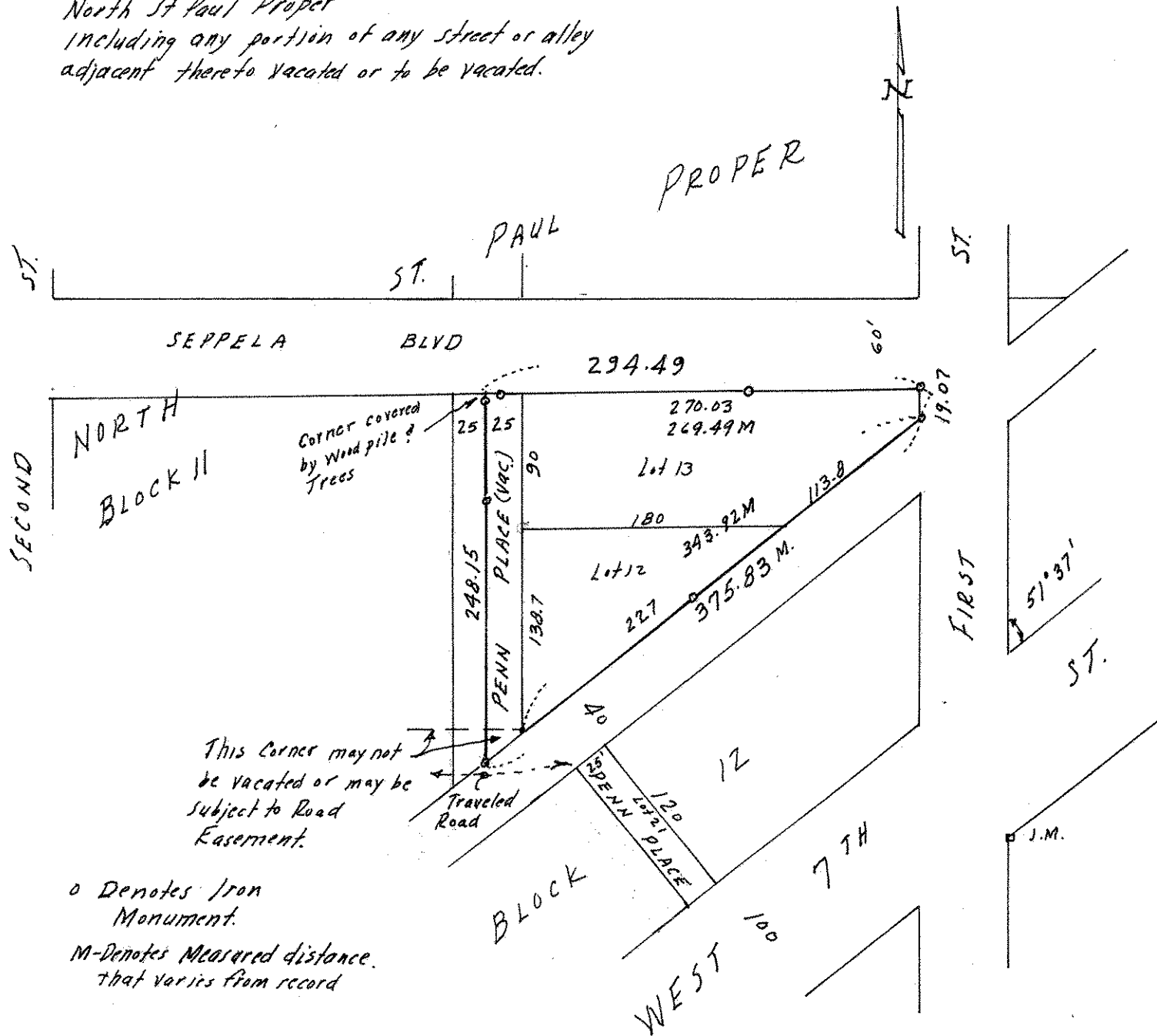
Date June 1966

Scale 1" = 100

By Charles O. Georgi
REGISTERED LAND SURVEYOR

Description:

*Lots 12 and 13
Block 11
North St Paul Proper
including any portion of any street or alley
adjacent thereto vacated or to be vacated.*



o Denotes Iron Monument.

M-Denotes Measured distance. That varies from record