

SE 162922

FROM THE OFFICE OF

# CHARLES O. GEORGI COMPANY

2215 West County Road B

Saint Paul, Minnesota 55113

REGISTERED CIVIL ENGINEER AND LAND SURVEYOR

## Certificate of Survey

I Hereby Certify that this plat shows a survey made by me of the property described on this plat, and that the corners are correctly placed as shown, and that all locations have been correctly shown.

Surveyed For RAYMOND DYKEMA

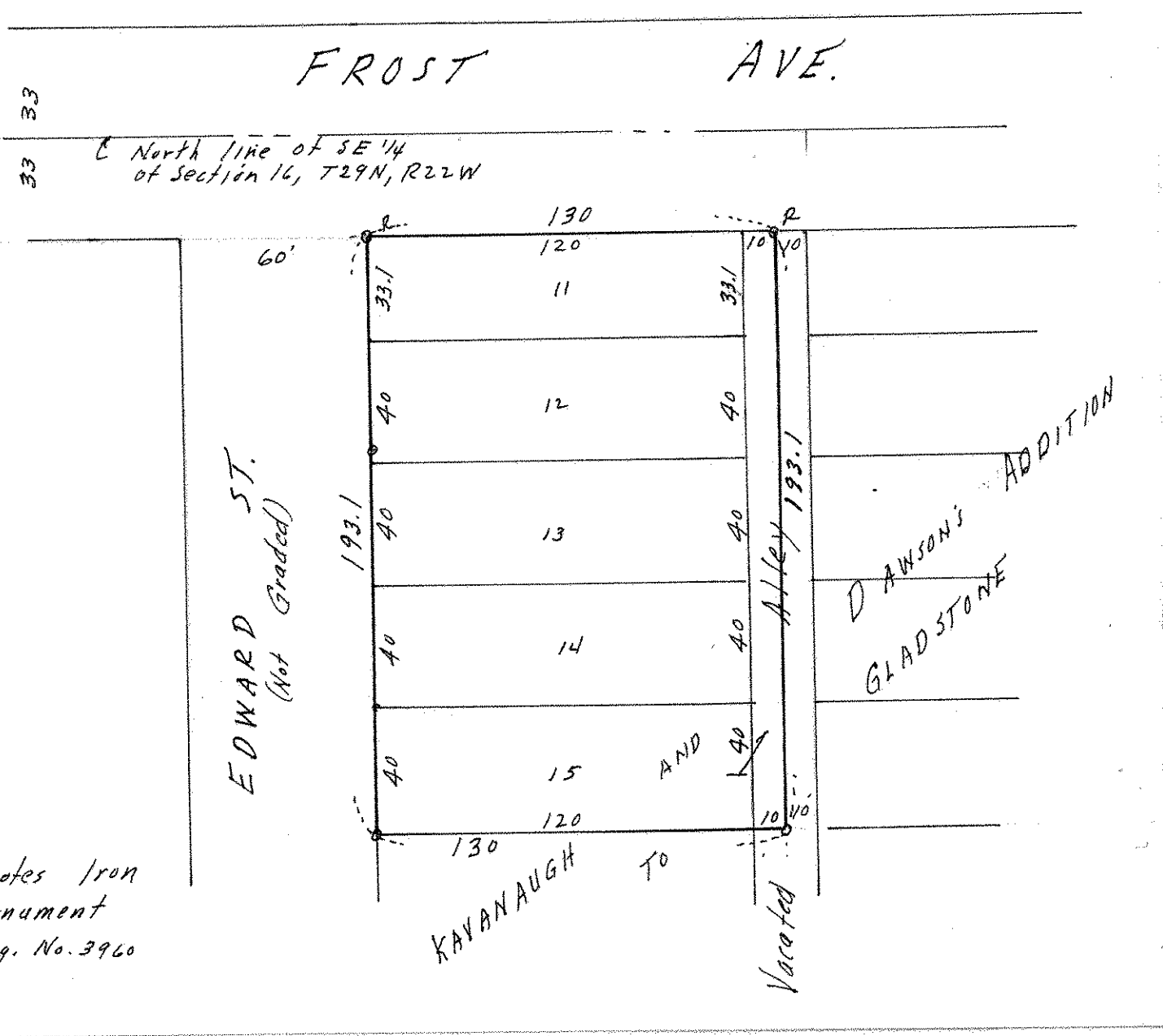
Date May 1968

Scale 1" = 50'

By Charles O. Georgi  
REGISTERED LAND SURVEYOR

### Description:

Lots 11, 12, 13, 14 and 15; and the West 1/2 of the adjoining vacated alley,  
Block 1,  
KAVANAUGH and DAWSON'S ADDITION TO GLADSTONE  
Ramsey County, Minn.



o Denotes Iron Monument  
R- Reg. No. 3960