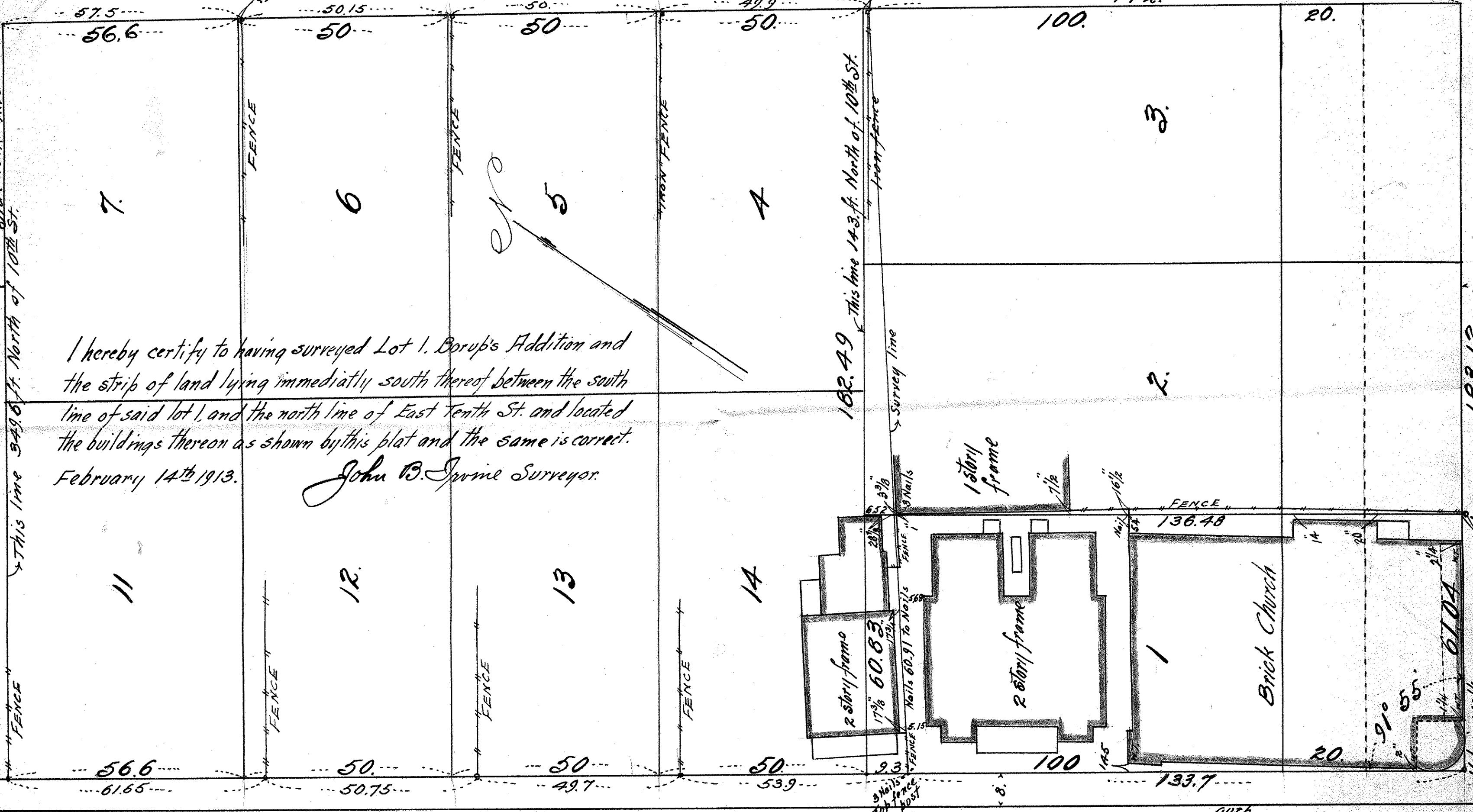


SIBLEY

ST. 49.5

SPRUCE ST.

Scale 20 ft. per inch.



I hereby certify to having surveyed Lot 1, Borup's Addition and the strip of land lying immediately south thereof between the south line of said lot 1, and the north line of East Tenth St. and located the buildings thereon as shown by this plat and the same is correct.  
 February 14th 1913.  
 John B. Irvine Surveyor.

TEMPERANCE

ST. 50.

183.12.  
 1007  
 49.5  
 ST.  
 E. TENTH