

50 ft EAST of WEST 50 ft.

BLOCK 1.

BUTMAN'S ADD.

JOHN B. IRVINE SURVEYOR.

416 GLOBE BLDG.

ST PAUL MINN.

MAY 23-07

SCALE 20 ft. per inch.

SUMMIT

AVE.

WEST LINE BUTMANS ADD.

WEST 50 ft.

83°53'

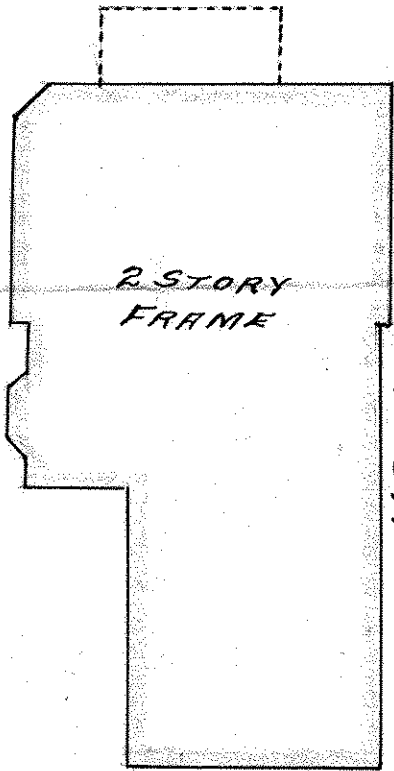
50.

HOLE IN WALK

83°53'

50.

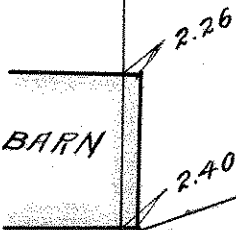
HOLE IN WALK



2 STORY
FRAME

135.0

112.17



BARN

2.26

2.40

52.94

106.40

MONT.

50.95

MONUMENT

19

STAKE

STAKE

