

SE 14, 29, 22

FROM THE OFFICE OF

# CHARLES O. GEORGI COMPANY

2215 West County Road B

Saint Paul 13, Minnesota

REGISTERED CIVIL ENGINEER AND LAND SURVEYOR

## Certificate of Survey

I Hereby Certify that this plat shows a survey made by me of the property described on this plat, and that the corners are correctly placed as shown, and that all locations have been correctly shown.

Surveyed For Symsock Development Corp.

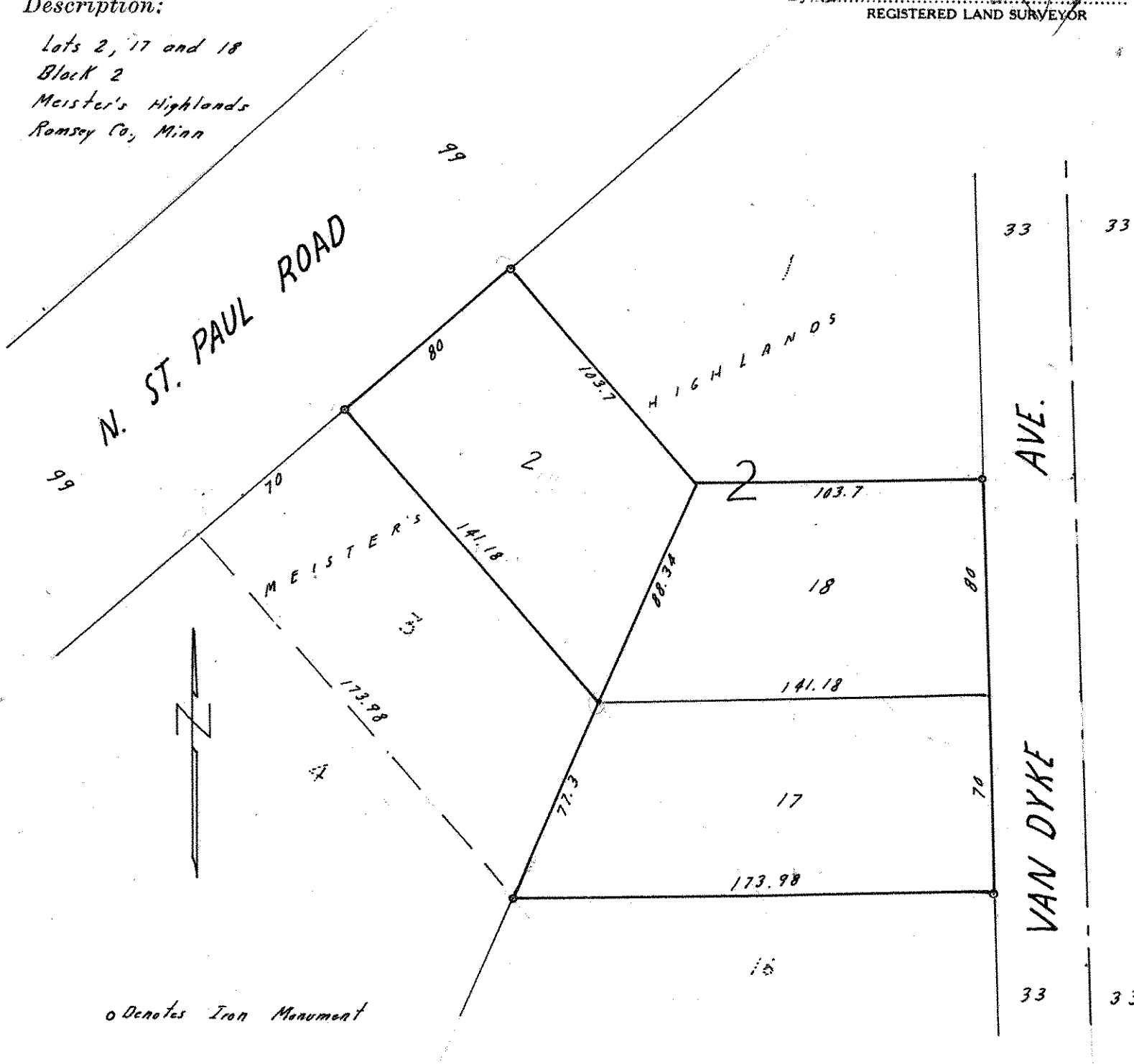
Date June 1945

Scale 1" = 50'

By Charles O. Georgi  
REGISTERED LAND SURVEYOR

### Description:

Lots 2, 17 and 18  
Block 2  
Meister's Highlands  
Ramsey Co., Minn



o Denotes Iron Monument