

FROM THE OFFICE OF

CHARLES O. GEORGI COMPANY

2215 West County Road B

Saint Paul 13, Minnesota

REGISTERED CIVIL ENGINEER AND LAND SURVEYOR

Certificate of Survey

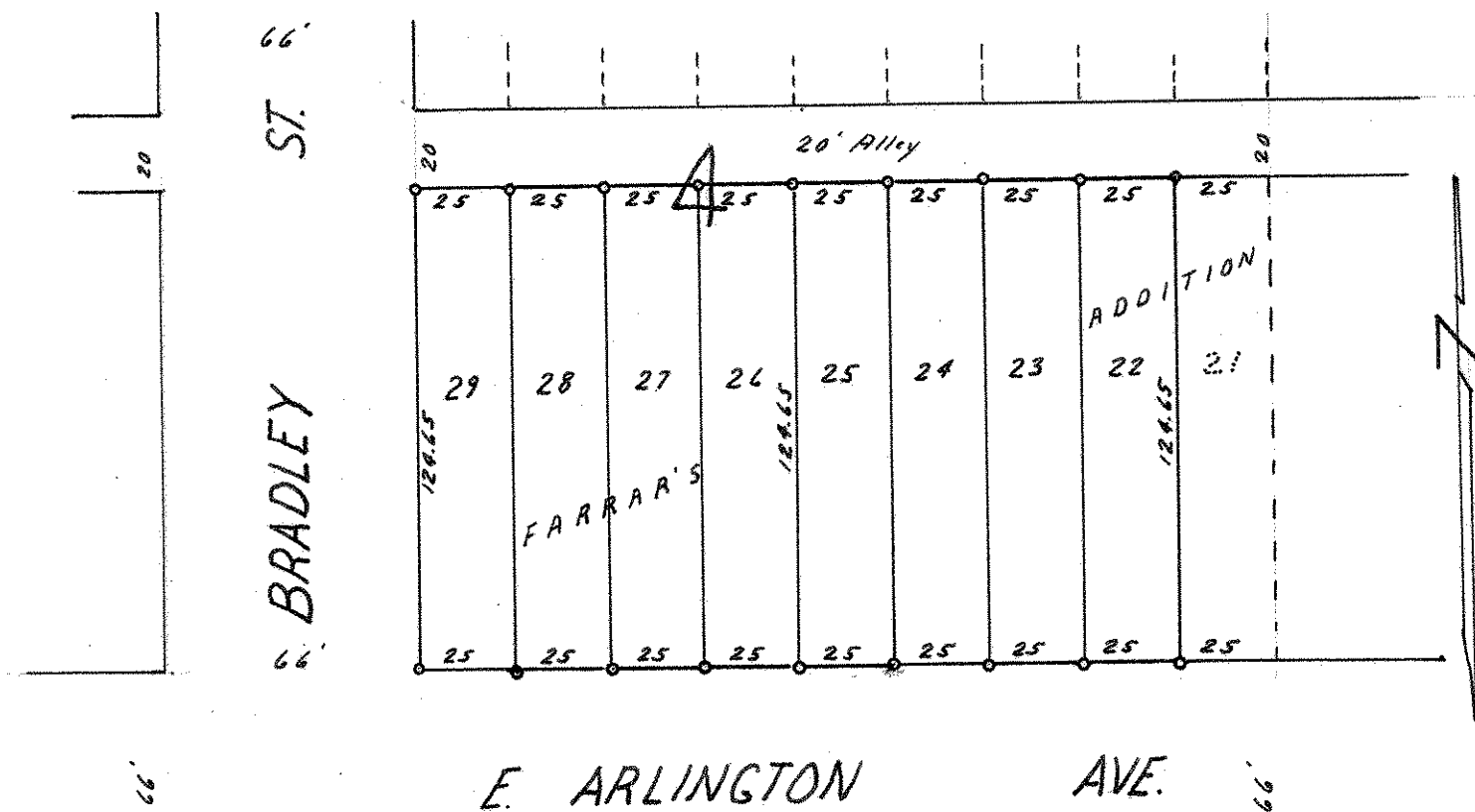
I Hereby Certify that this plat shows a survey made by me of the property described on this plat, and that the corners are correctly placed as shown, and that all locations have been correctly shown.

Surveyed For Jac Toney
Date September 1964
Scale 1" = 50'

By Charles O. Georgi
REGISTERED LAND SURVEYOR

Description:

Lots 22, 23, 24, 25, 26, 27, 28, and 29, Block 4, Farrar's Addition



o Denotes Iron Monument
owner to group lots into desired buildable units.