

SE 30 29 22

Certificate of Survey

From the office of
GEORGI-SCHMIDT & ASSOC. INC.
3092 No. Lexington Ave., Roseville, Mn. 55113
LAND SURVEYING
483-4408

I Hereby Certify that this plat shows a survey made by me of the property described on this plat, and that the corners are correctly placed as shown, and that all locations have been correctly shown.

Job Number: 188

Surveyed For Tom Veesenmeyer

Date November 9, 1978

Scale 1" = 40'

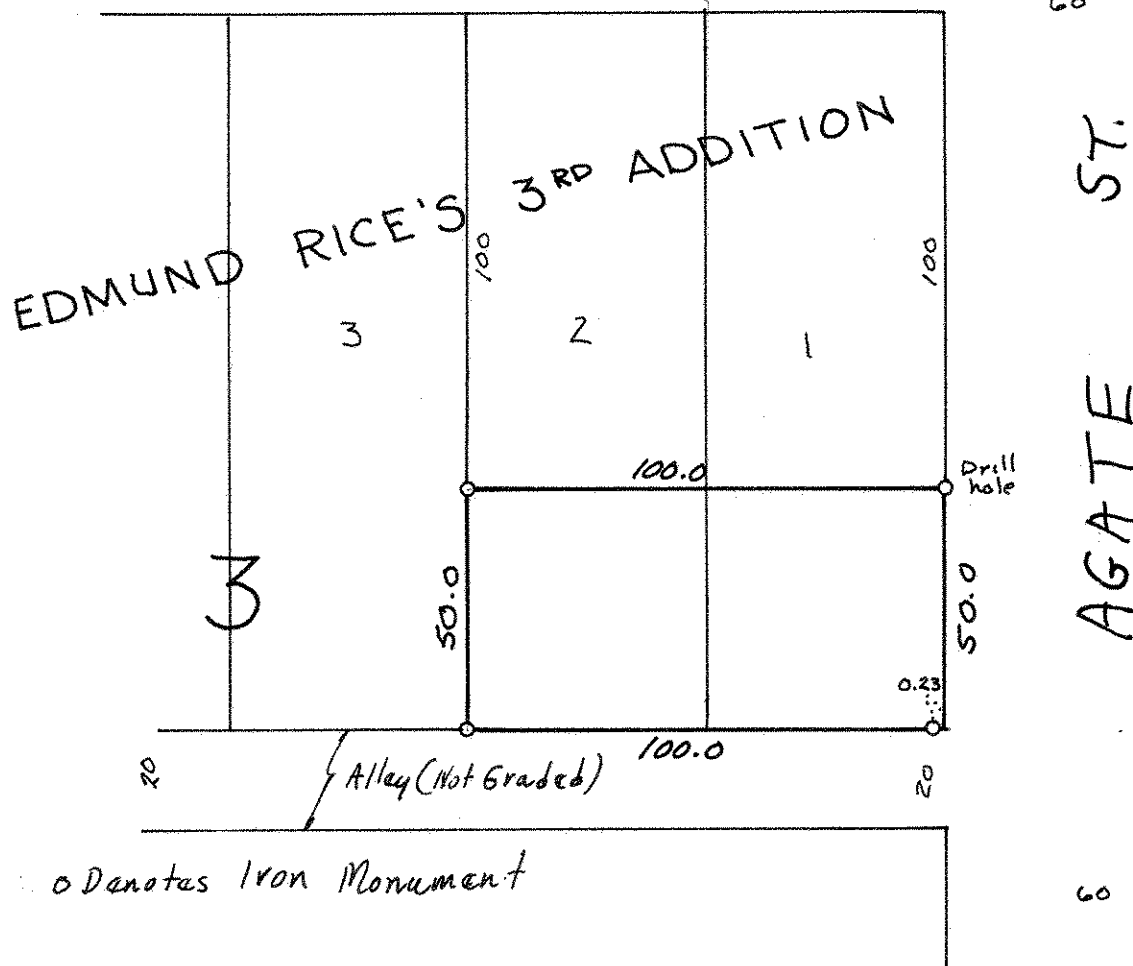
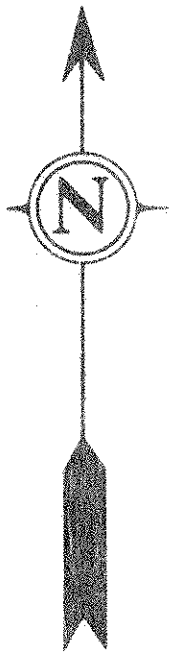
By Wm. W. Schmielt
REGISTERED LAND SURVEYOR

Description:

South 50 feet of Lots 1 and 2, Block 3
Edmund Rice's 3rd Addition

RAMSEY County, Minnesota

3 SIMS AVE. 60



o Denotes Iron Monument