

FROM THE OFFICE OF

NW 20 29 22

# CHARLES O. GEORGI COMPANY

2215 West County Road B

Saint Paul, Minnesota 55113

REGISTERED CIVIL ENGINEER AND LAND SURVEYOR

## Certificate of Survey

I Hereby Certify that this plat shows a survey made by me of the property described on this plat, and that the corners are correctly placed as shown, and that all locations have been correctly shown.

Surveyed For Robert Schneider

Date Nov. 1965

Scale 1" = 100'

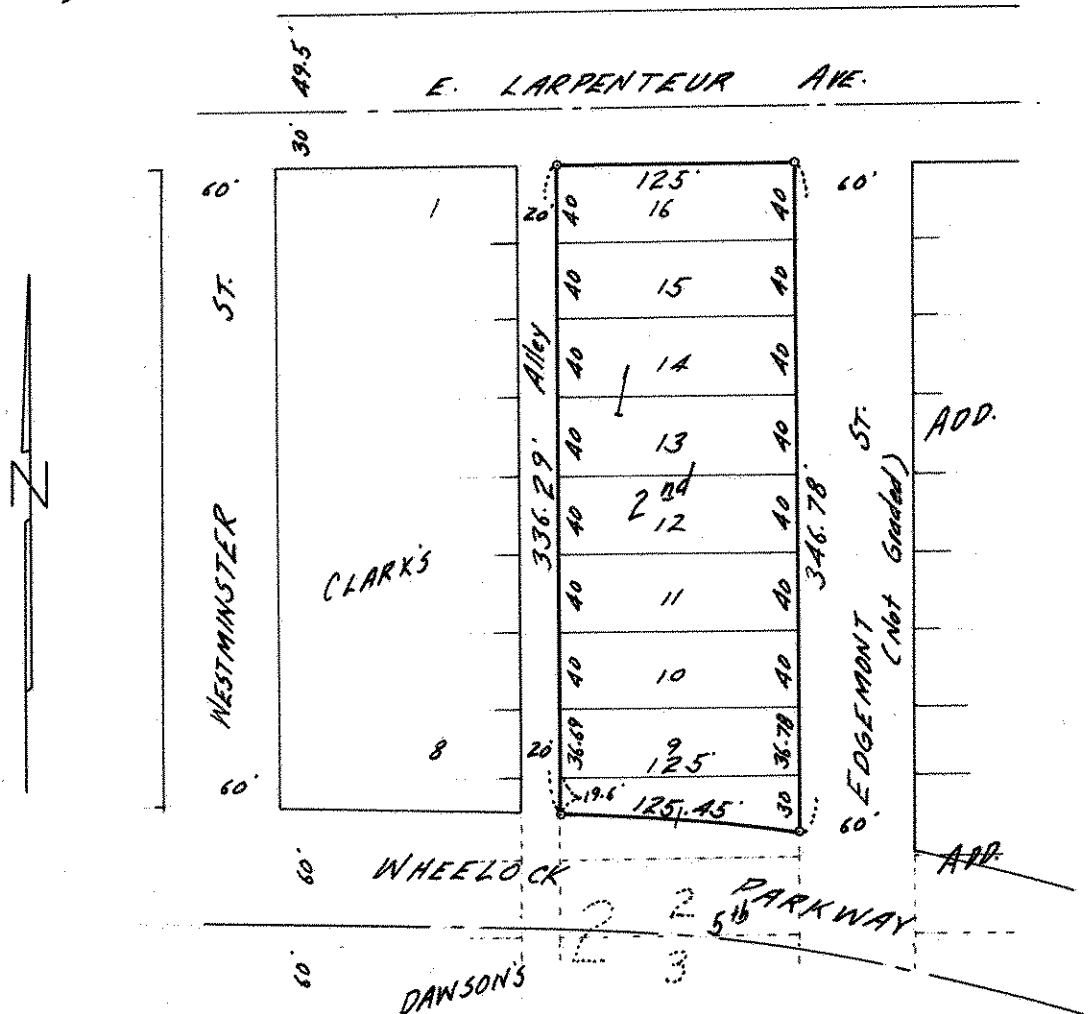
By Charles O. Georgi  
REGISTERED LAND SURVEYOR

**Description:**

Lots 9 thru 16, Block 1, Clark's 2<sup>nd</sup> Addition.  
(and part of Lots 1 and 2, Block 2, Dawson's 5<sup>th</sup> Addition lying Northerly of the North line of Wheelock Parkway.)

**NOTE.**

( ) desc. given verbally by owner.



o Denotes Iron Monument.