

SE 302922

FROM THE OFFICE OF

CHARLES O. GEORGI COMPANY

2215 West County Road B

Saint Paul 13, Minnesota

REGISTERED CIVIL ENGINEER AND LAND SURVEYOR

Certificate of Survey

I Hereby Certify that this plat shows a survey made by me of the property described on this plat, and that the corners are correctly placed as shown, and that all locations have been correctly shown.

Surveyed For L. W. SCHOENING.

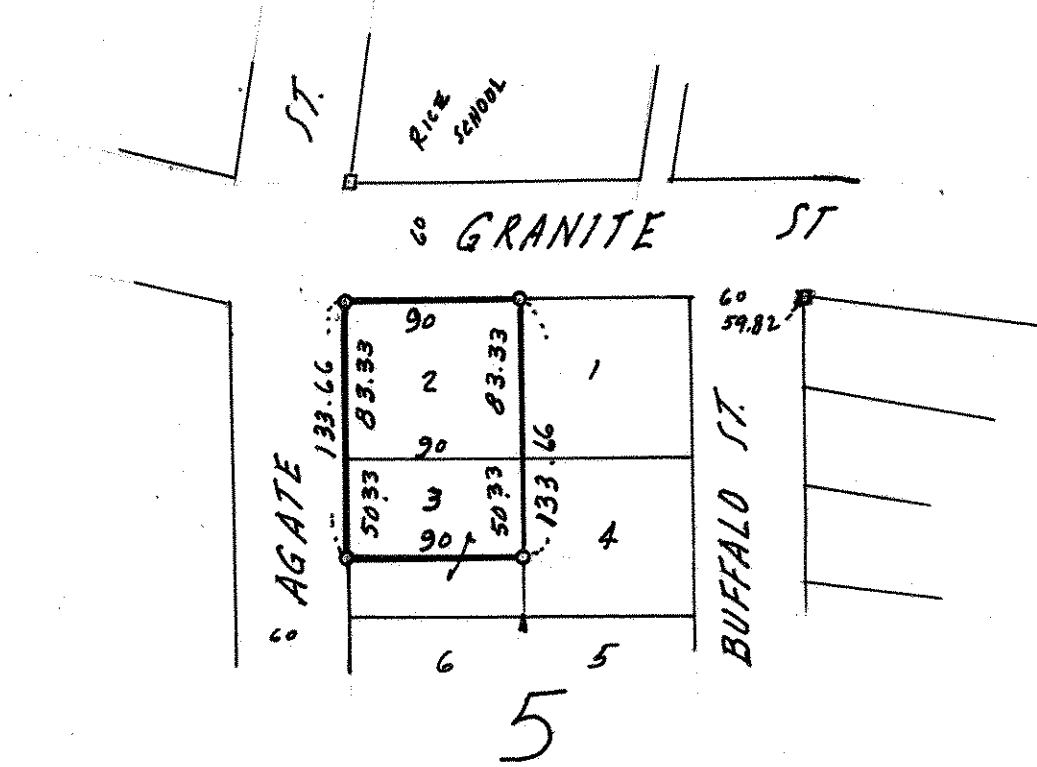
Date July 1958

Scale 1" = 100'

By Charles O. Georgi
REGISTERED LAND SURVEYOR

Description:

Lot 2 and the North 50.33 feet of Lot 3
Block 5
Edmund Rice's Second Addition to City of St. Paul



• Denotes Iron Monument.