

SW 23 2922

FROM THE OFFICE OF

# CHARLES O. GEORGI COMPANY

2215 West County Road B

Saint Paul 13, Minnesota

REGISTERED CIVIL ENGINEER AND LAND SURVEYOR

## Certificate of Survey

I Hereby Certify that this plat shows a survey made by me of the property described on this plat, and that the corners are correctly placed as shown, and that all locations have been correctly shown.

Surveyed For A. SCHREIBER

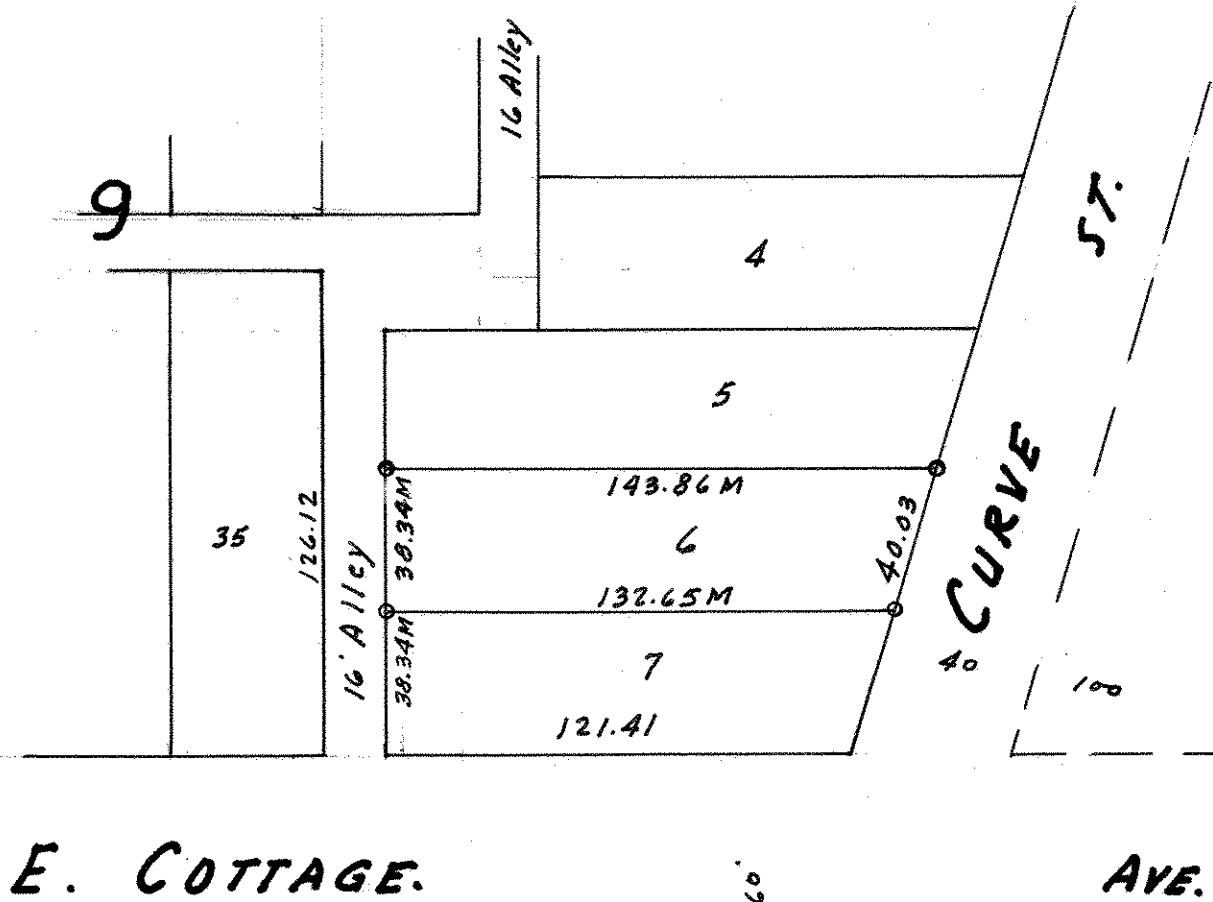
Date September 30, 1959

Scale 1" = 50'

By Charles O. Georgi  
REGISTERED LAND SURVEYOR

Description:

Lot 6  
Block 9  
HAYDEN HEIGHTS



M - Measured distance  
o Denotes Iron Monument.