

FROM THE OFFICE OF

# CHARLES O. GEORGI COMPANY

2215 West County Road B

Saint Paul 13, Minnesota

REGISTERED CIVIL ENGINEER AND LAND SURVEYOR

## Certificate of Survey

I Hereby Certify that this plat shows a survey made by me of the property described on this plat, and that the corners are correctly placed as shown, and that all locations have been correctly shown.

Surveyed For EDWARD SCHWIEKE

Date June 1961

Scale 1" = 50'

By Charles O. Georgi  
REGISTERED LAND SURVEYOR

Description:

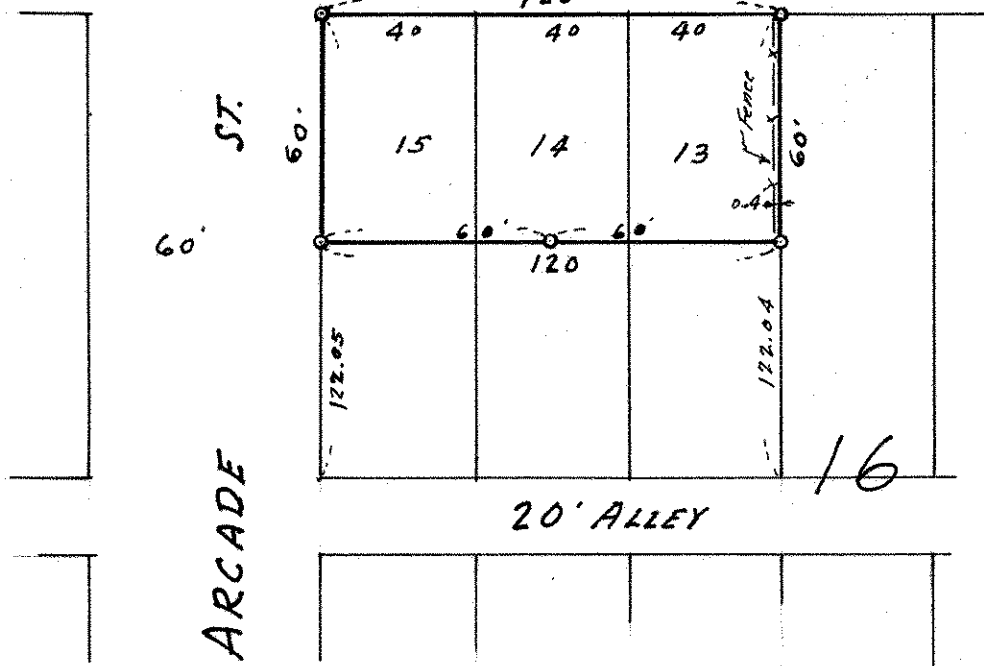
The North 60 feet of  
Lots 13, 14 and 15,  
Block 16  
Eastville Heights

E.

JESSAMINE

60

AVE.



o Denotes Iron Monument.