

FROM THE OFFICE OF

# CHARLES O. GEORGI COMPANY

2215 West County Road B

Saint Paul 13, Minnesota

REGISTERED CIVIL ENGINEER AND LAND SURVEYOR



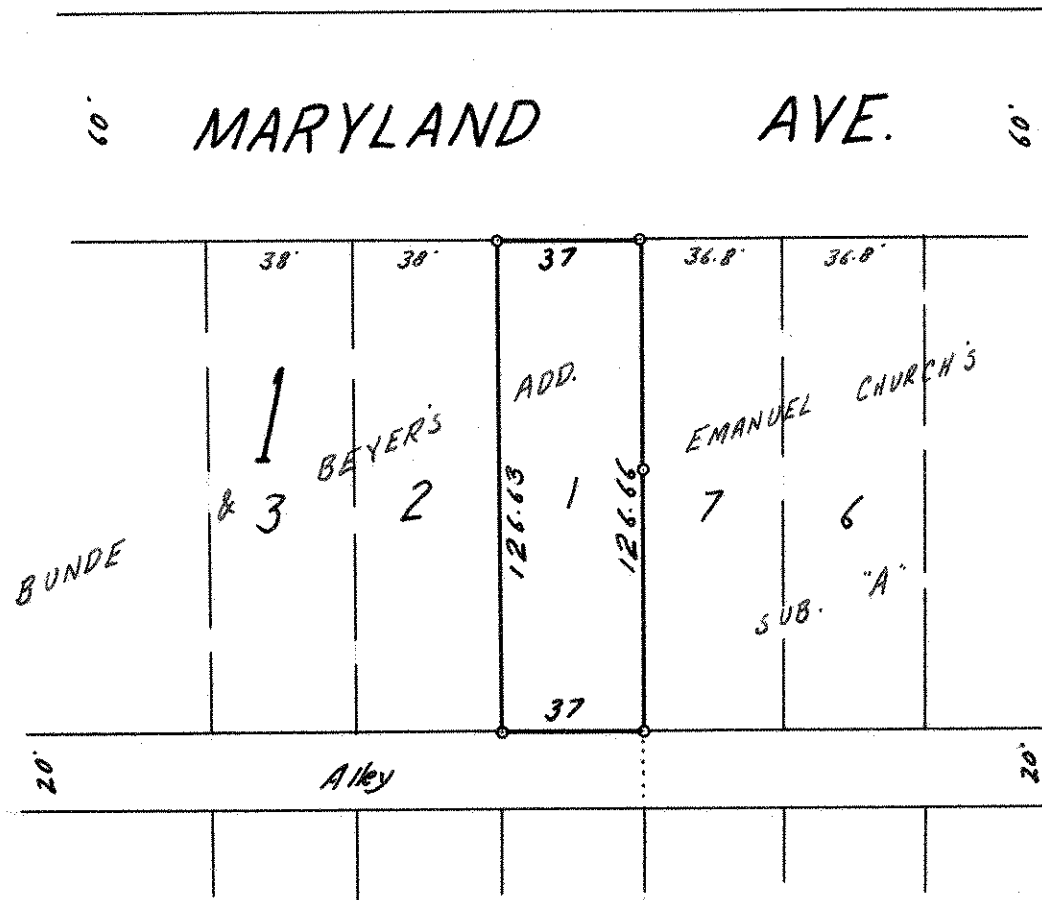
I Hereby Certify that this plat shows a survey made by me of the property described on this plat, and that the corners are correctly placed as shown, and that all locations have been correctly shown.

Surveyed For Albert Shaketer  
 Date May 1964  
 Scale 1" = 50'

By Charles O. Georgi  
 REGISTERED LAND SURVEYOR

Description:

Lot 1, Block 1, Bunde & Beyers Add.



o Denotes Iron Monument