

JOHN B. IRVINE, SURVEYOR
 408 GLOBE BLDG.
 ST. PAUL, MINN.
 MAY 2-1916.
 MAY 5-1920.
 Scale 20ft. per inch.

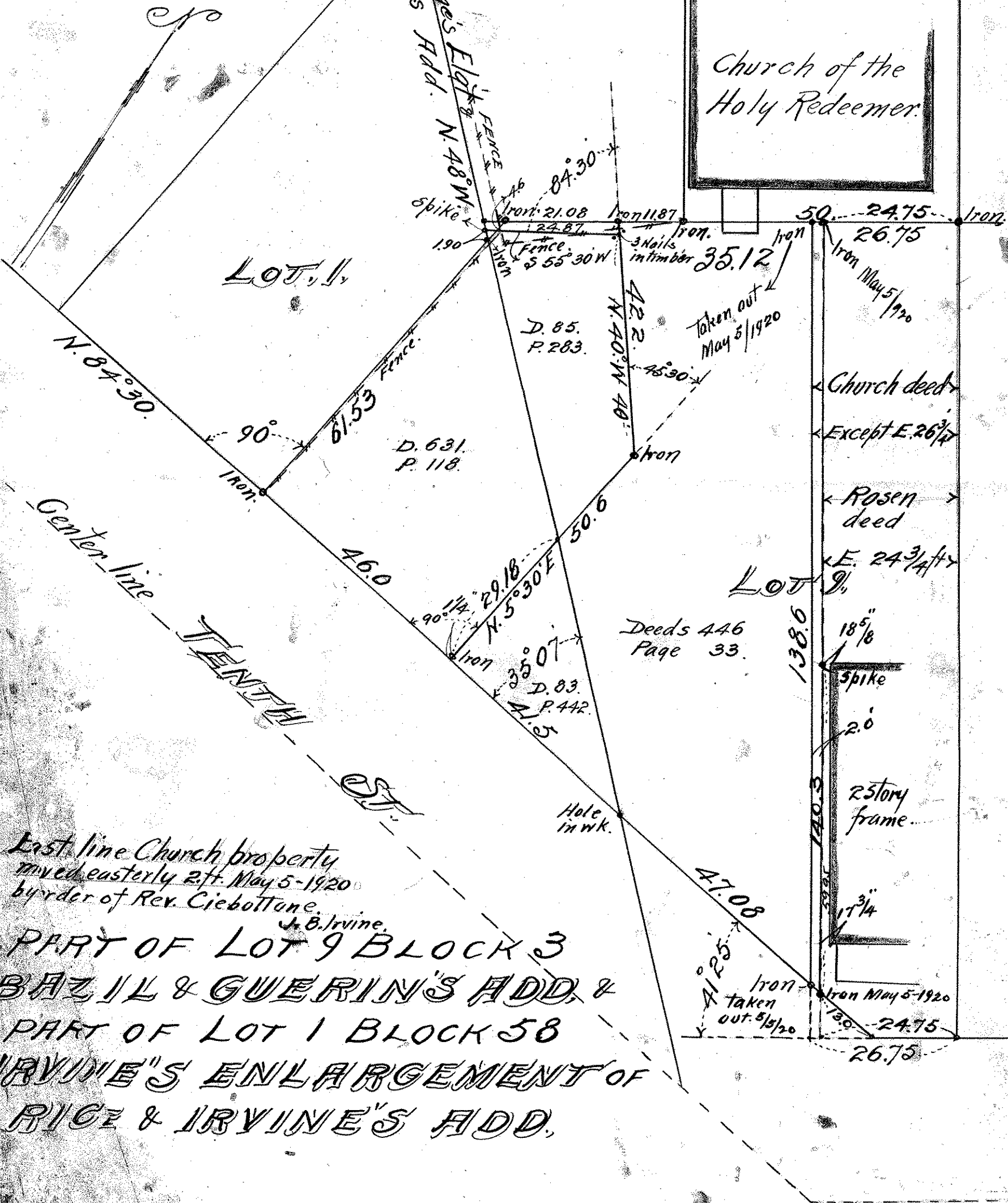
Line between Irvine's Ely & Basil & Guerin's Add. N. 48° W.

LOT 8

LOT 7

Church of the Holy Redeemer

LOT 1



East line Church property moved easterly 2ft. May 5-1920 by order of Rev. Ciebotton.

J. B. Irvine
 PART OF LOT 9 BLOCK 3
 BAZIL & GUERIN'S ADD. &
 PART OF LOT 1 BLOCK 58
 IRVINE'S ENLARGEMENT OF
 RICE & IRVINE'S ADD.