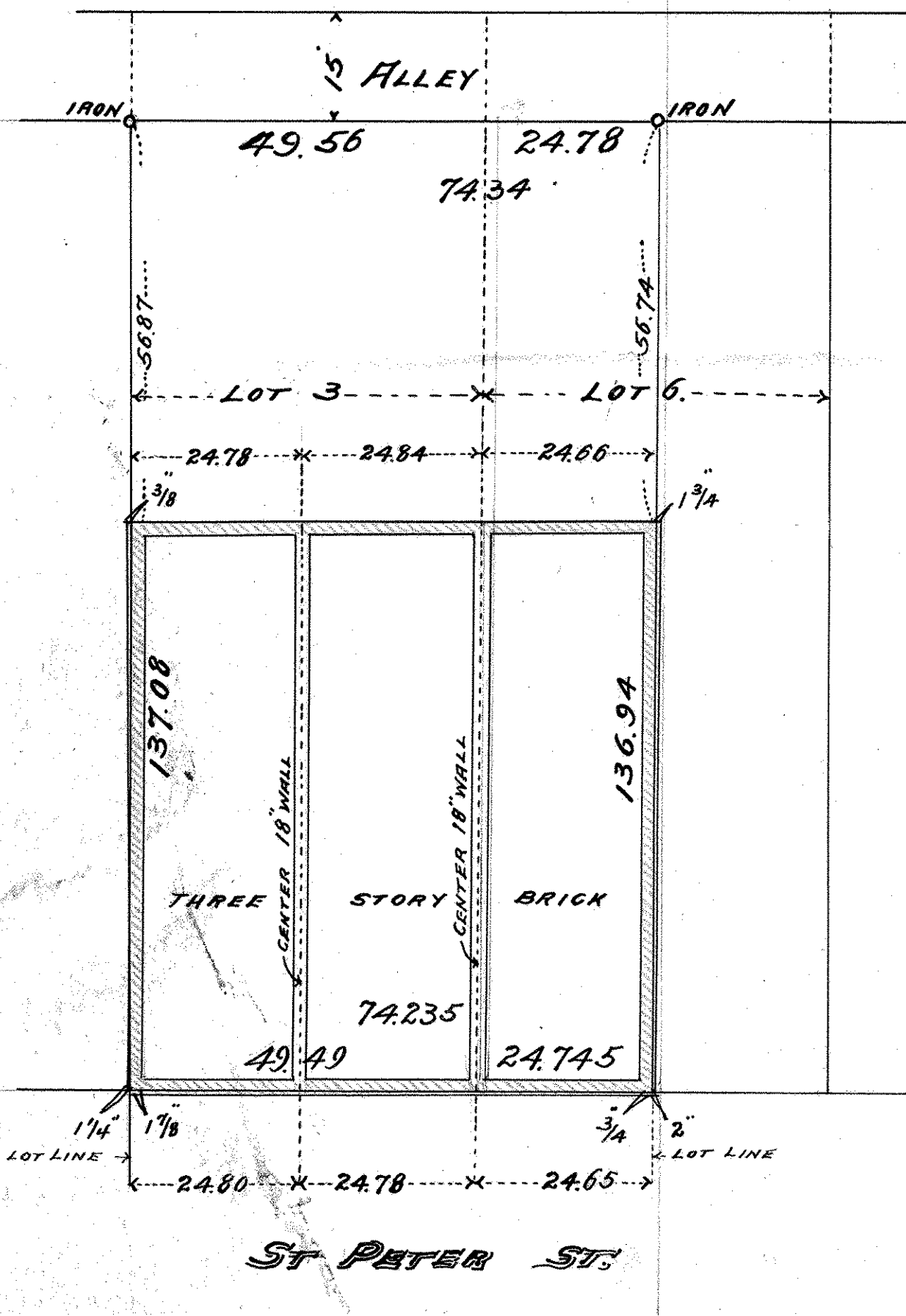


LOT 3 AND NORTH 1/2 LOT 6
BLOCK 11
BAZILLE & GUERIN'S
ADDITION.

JOHN B. IRVINE, SURVEYOR.
ROOM 416 GLOBE BLDG.
ST PAUL MINN.
AUG. 3-06.

SCALE 1 IN. = 20 FT.



ST PAUL MINN. AUG. 3-06.

I HEREBY CERTIFY THAT THIS MAP CORRECTLY REPRESENTS
LOT 3 AND THE NORTH 1/2 OF LOT 6 BLOCK 11 BAZILLE & GUERIN'S
ADDITION, AND THE LOCATION OF THE THREE STORY BRICK
BUILDING THEREON AS THE SAME WAS SURVEYED BY ME THIS DAY.
MY EXPERIENCE COVERING A PERIOD OF 22 YEARS SURVEYING
REAL ESTATE IN ST. PAUL AND RAMSEY COUNTY MINN.

John B. Irvine