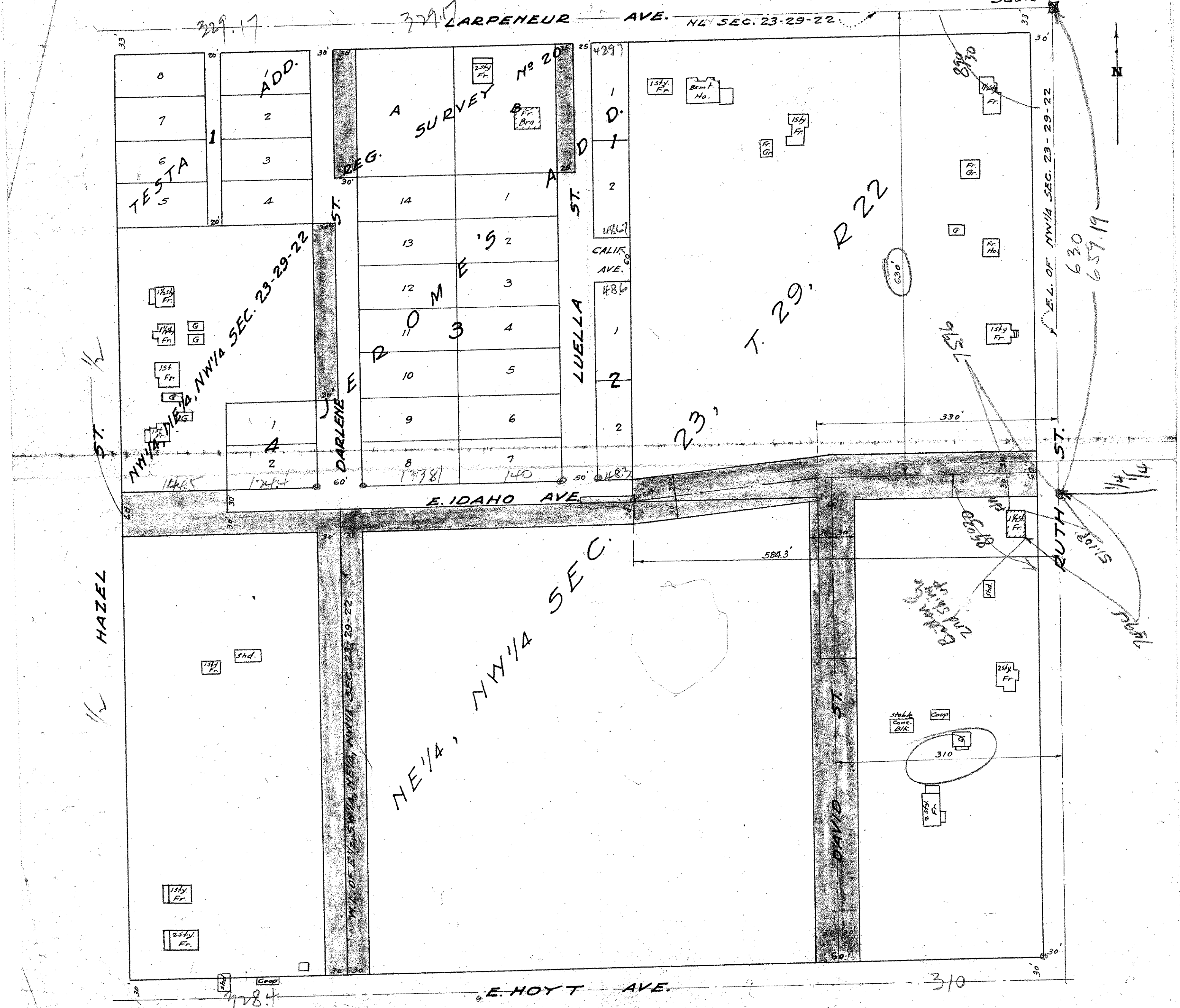


DARLENE ST.  
 Larpenteur to Hoyt  
 IDAHO AVE.  
 Hazel to Ruth  
 DAVID ST.  
 Idaho to Hoyt  
 LUELLA ST.  
 Larpenteur - Southerly  
**OPENING**  
 Bureau of Engineers  
 April 9, 1954.  
 Scale: 1"=100'



DARLENE ST.  
 IDAHO AVE.  
 DAVID ST.  
 LUELLA ST.  
**OPENING**  
 OF 4' NO. 936

N.B. 731  
 2462  
 2834  
 2889