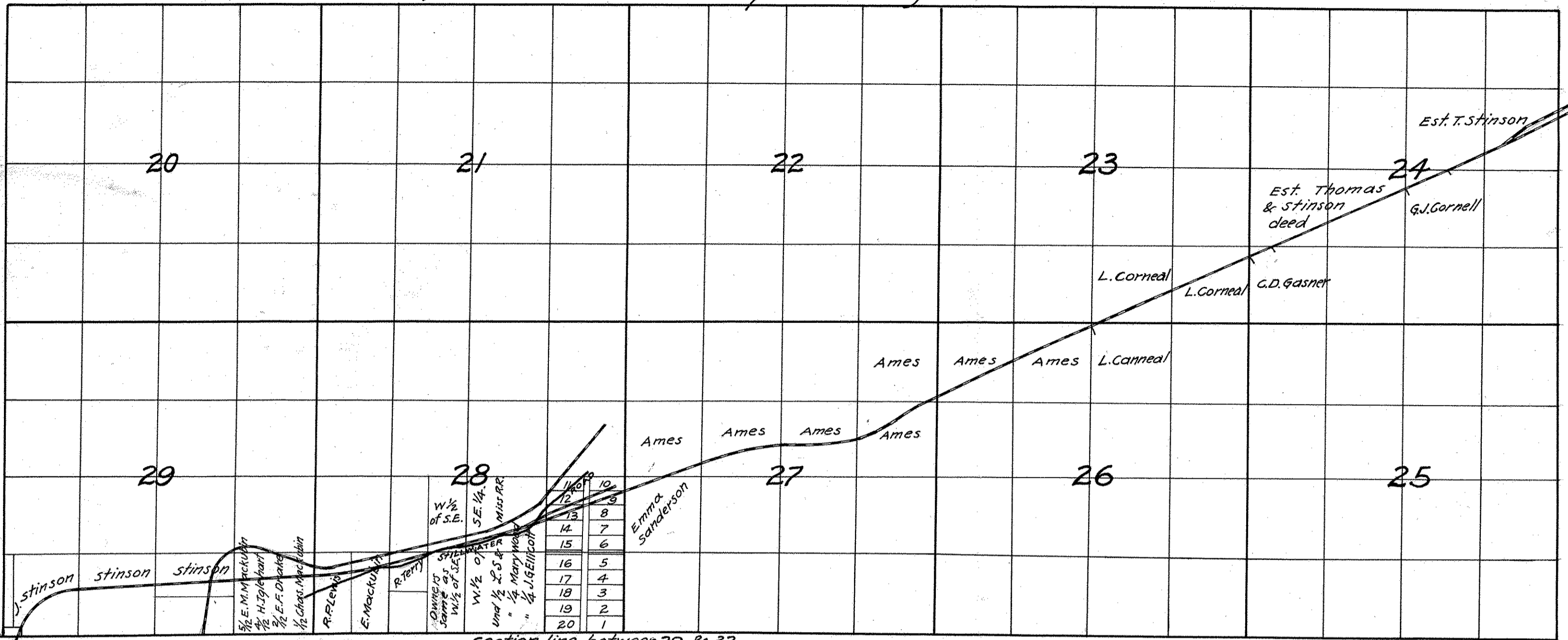


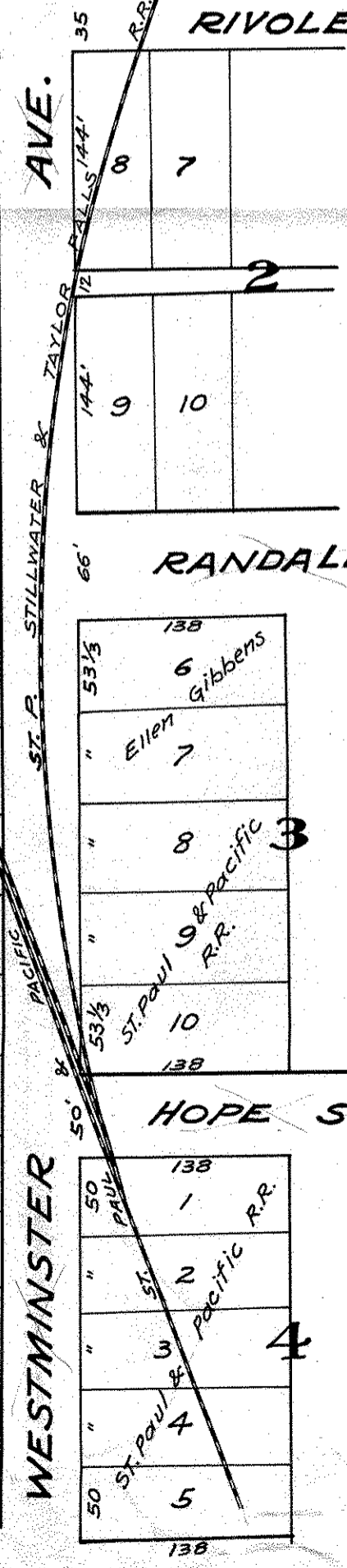
(plat referred to in petition.)
John B. Samborn, Atty For said Rail Road Co.)
Part of Township 29. Range 22. 4th Prin. Meridan.



COR SEC.
31 & 32, 29 & 30.

section line between 31 & 32 T. 29, R. 22.

35	148.5
28	
50	27 Horace Bigelow
26	
25	
24	
23	
22	
21	
20	
19	
18	
1	
17	
16	
15	
14	
13	
12	
11	
10	



Lots 7, 8 & 9 owned by
John L. Merriam.
Amherst H. Wilder.
Wm. B. Litchfield.
Adelaide A. Nichols.

6774.
St. Paul, Stillwater &
Taylor Falls Rail Road
Company.

Petition for appoint-
ment of Commissioners
to assess damages,
benefits etc.

Filed. Sept, 18, 1871.
Albert Armstrong.
Clerk.
by Jas. O'Brien
deputy Clerk.

Warrens & Winslow's Add. to St. Paul.

8334