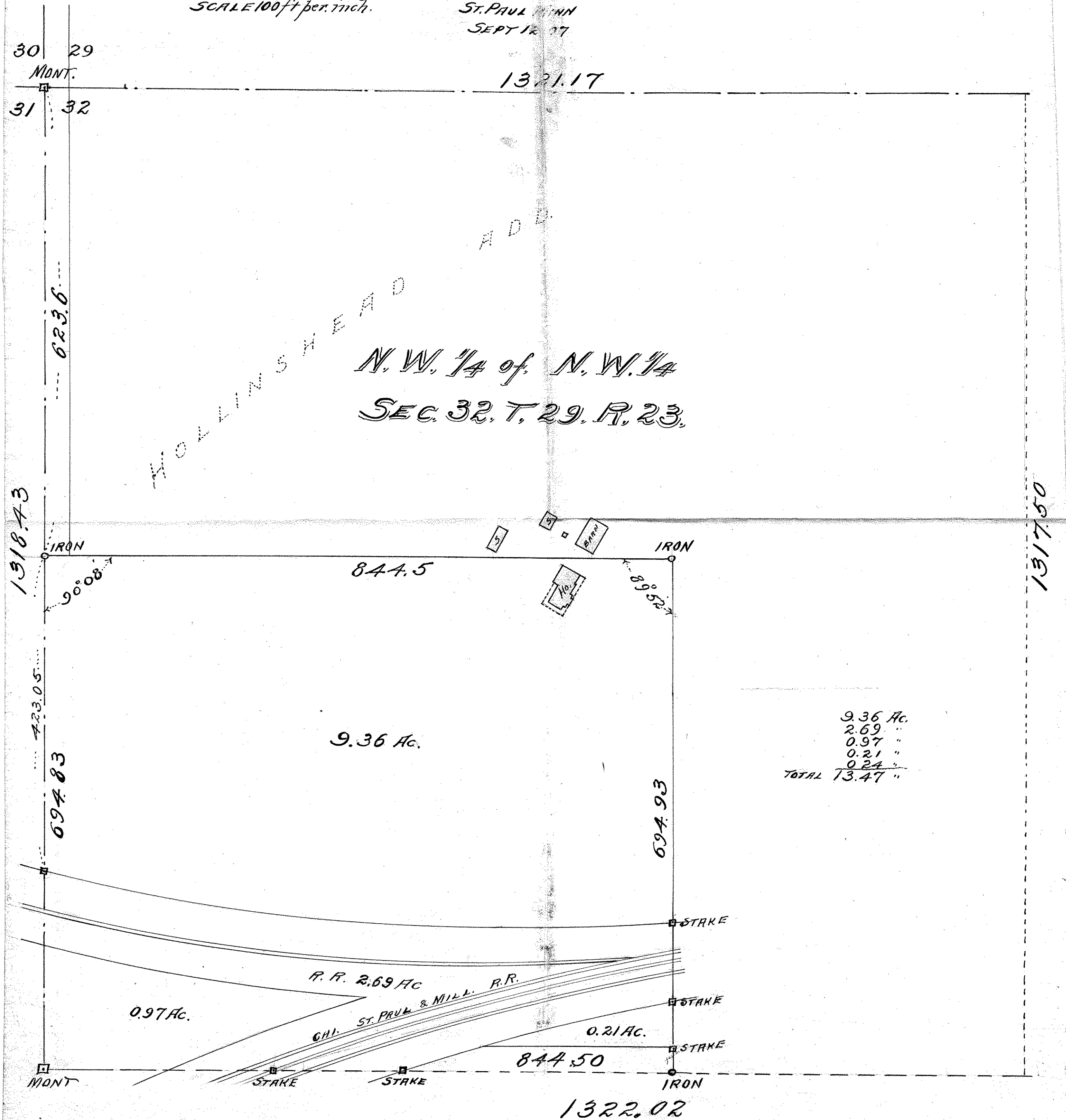


PART OF THE
 N.W. 1/4 OF N.W. 1/4
 SEC. 32 T. 29. R. 23.

JOHN BIRVINE SURVEYOR
 416 GLOBE BLDG.
 ST. PAUL MINN
 SEPT 12 1917

SCALE 100ft per inch.



9.36	Ac.
2.69	"
0.97	"
0.21	"
0.24	"
<hr/>	
TOTAL	13.47 "