

IRON

IRON

1308.47

1316.05

1315.88

S.W. 1/4 of S.E. 1/4
SEC. 13, T. 29, R. 23.

39.49 Ac.

LAKE

Present

PROPOSED
DITCH

7+78.8
7+81.0

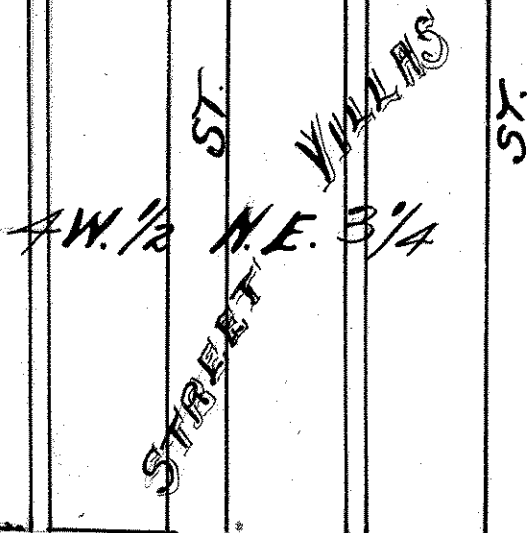
1/4 COR. N. LINE SEC
LARPEUR AVE.

MONT.

1303.63

MONT.

S.W. 1/4 of S.E. 1/4 SEC. 13, T. 29, R. 23,
PROPOSED DITCH.

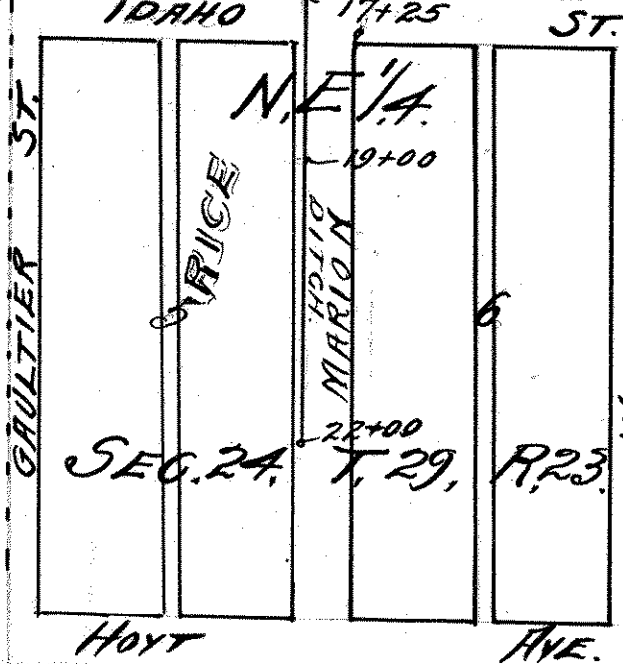


N.E. 3/4

WILLIAMS
STREET

JOHN B. IRVINE, SURVEYOR.
OCT. 7. - 1906
SCALE 200 ft. per. inch.

14+20



GAULTIER ST.
IRVINE ST.
MORION ST.
WOODBRIDGE ST.
HOYT AVE.

IDAHO

17+25

N.E. 1/4

MORION

SEC. 24, T. 29, R. 23.

HOYT

AVE.