

FROM THE OFFICE OF

CHARLES O. GEORGI COMPANY

2215 West County Road B

Saint Paul 13, Minnesota

REGISTERED CIVIL ENGINEER AND LAND SURVEYOR

Certificate of Survey

I Hereby Certify that this plat shows a survey made by me of the property described on this plat, and that the corners are correctly placed as shown, and that all locations have been correctly shown.

Surveyed For J. WEGLEITNER

Date OCTOBER 1959

Scale 1" = 200'

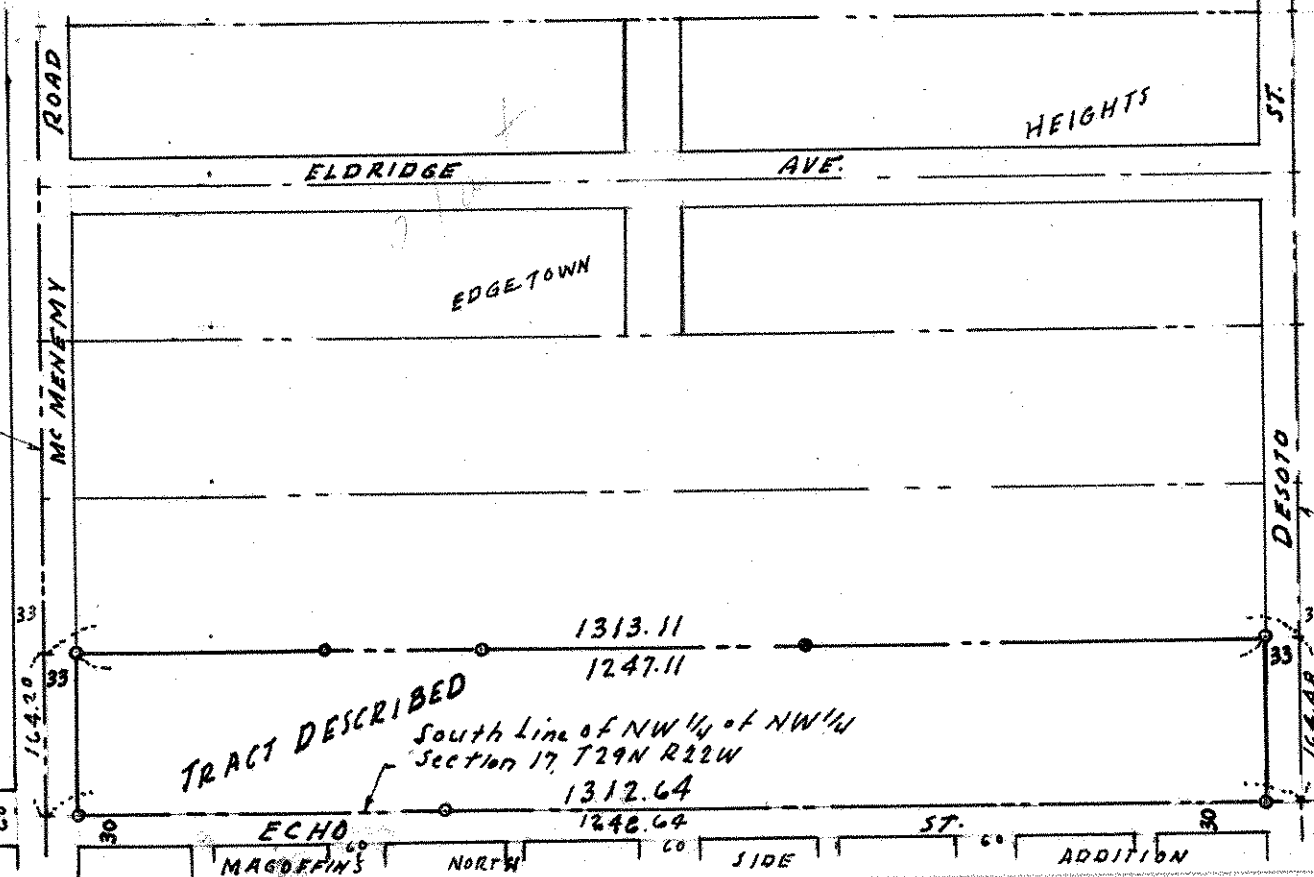
By Charles O. Georgi
REGISTERED LAND SURVEYOR

Description:

The South 1/8 of the NW 1/4 of the NW 1/4 of Section 17, T29N, R22W according to Government Survey thereof; subject to McMenemy Road and Desoto St.

JAMES SECOND ADDITION

West line of Section 17
T29N R22W



TRACT DESCRIBED
South Line of NW 1/4 of NW 1/4
Section 17, T29N R22W

East Line of NW 1/4 of NW 1/4
Section 17, T29N R22W

o Denotes Iron Monument



1642.0
1644.8
1313.11
1247.11
1312.64
1246.64
ECHO
MAGOFFIN'S
NORTH
SIDE
ADDITION