

FROM THE OFFICE OF

CHARLES O. GEORGI COMPANY

2215 West County Road B

Saint Paul, Minnesota 55113

REGISTERED CIVIL ENGINEER AND LAND SURVEYOR



**Certificate
of Survey**

I Hereby Certify that this plat shows a survey made by me of the property described on this plat, and that the corners are correctly placed as shown, and that all locations have been correctly shown.

Surveyed For Don Palme

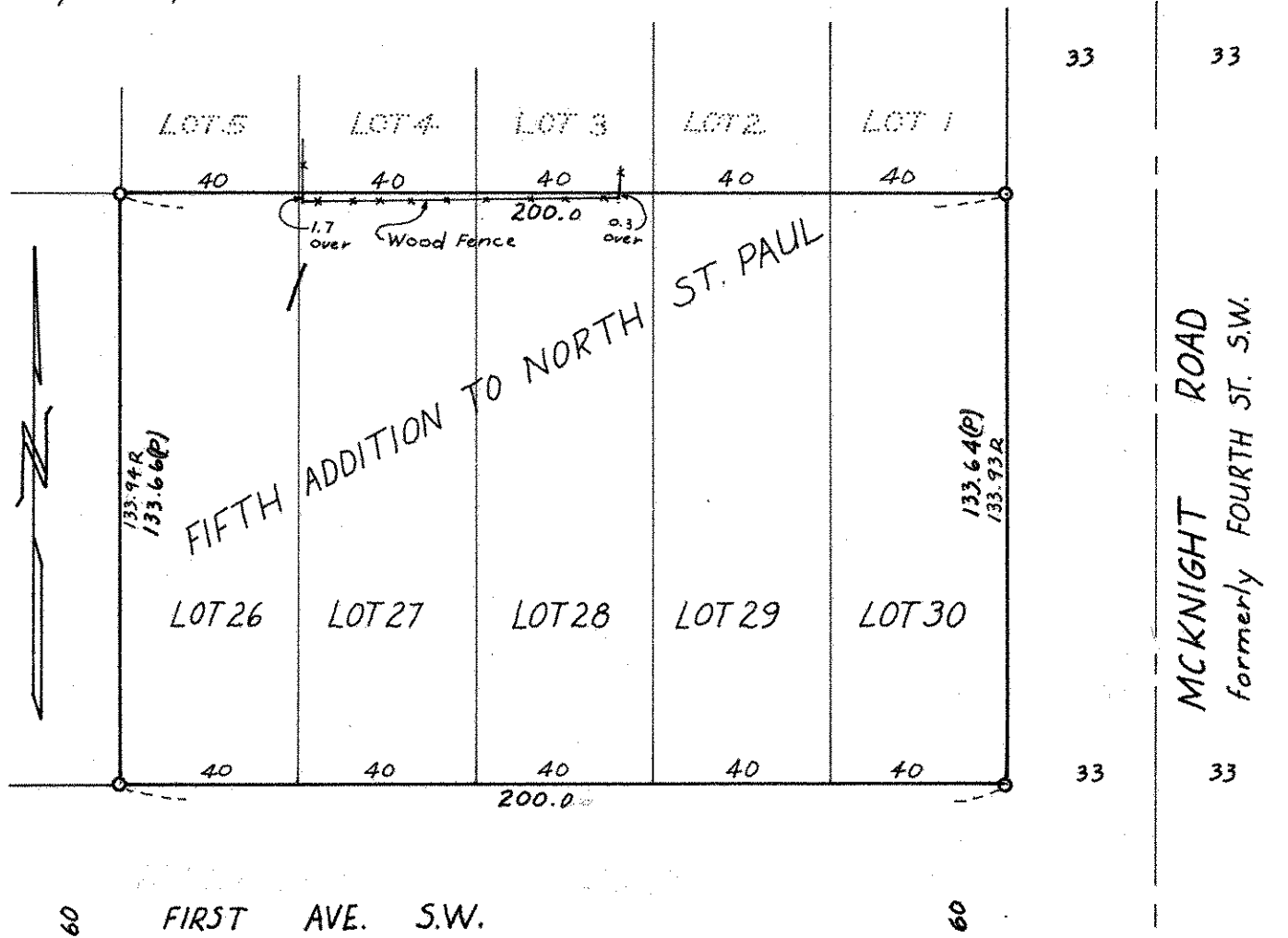
Date Aug. 1970

Scale 1" = 40'

By Charles O. Georgi
REGISTERED LAND SURVEYOR

Description:

Lots 26, 27, 28, 29 and 30,
Block 1,
Fifth Addition to North St. Paul,
Ramsey County, Minnesota.



○ Denotes Iron Monument
R=Denotes Record Distance
(P) Denotes Prorated Distance