

FROM THE OFFICE OF

# CHARLES O. GEORGI COMPANY

2215 West County Road B

Saint Paul, Minnesota 55113

REGISTERED CIVIL ENGINEER AND LAND SURVEYOR



## Certificate of Survey

I Hereby Certify that this plat shows a survey made by me of the property described on this plat, and that the corners are correctly placed as shown, and that all locations have been correctly shown.

Surveyed For Chalmer Quigley

Date March 1912

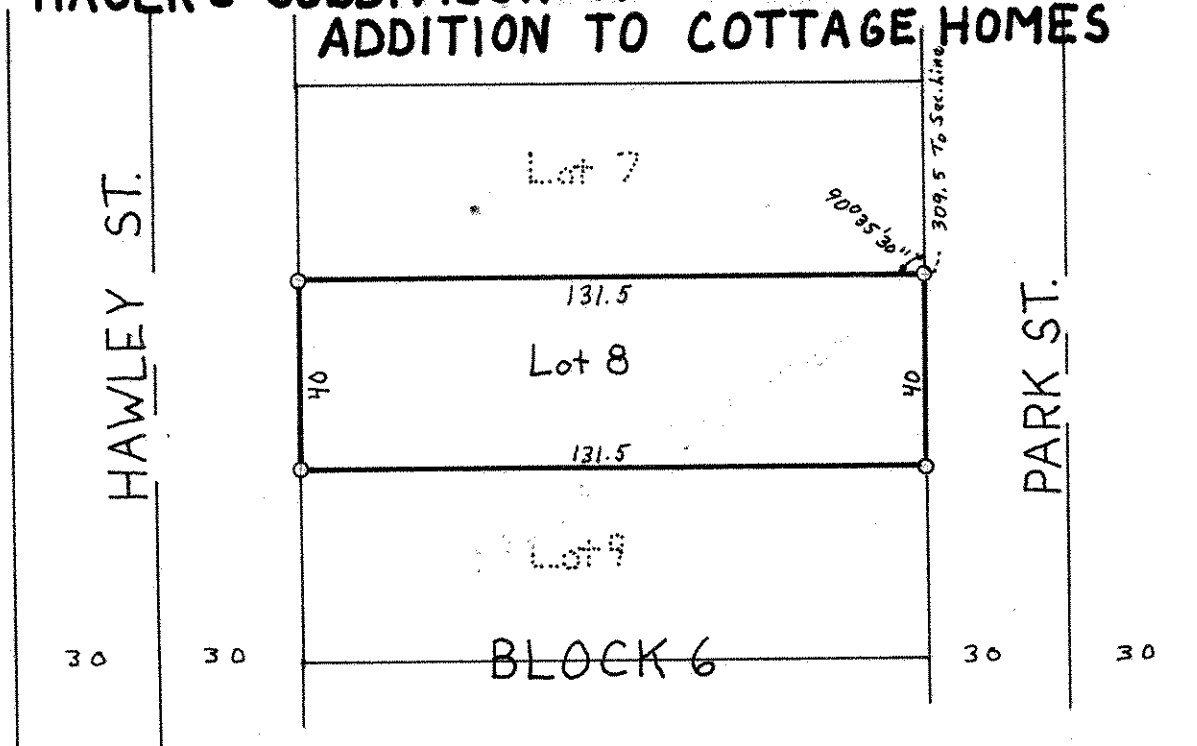
Scale 1" = 40'

By Charles O. Georgi  
REGISTERED LAND SURVEYOR

**Description:**

Lot 8, Block 6, Hager's Subdivision of  
Lots 1-7 and 14-18 of Walcott's Addition  
to Cottage Homes.  
Ramsey County, Minnesota

### HAGER'S SUBDIVISION OF WALCOTT'S ADDITION TO COTTAGE HOMES



○ Denotes Iron Pipe Monument