

FROM THE OFFICE OF

# CHARLES O. GEORGI COMPANY

2215 West County Road B

Saint Paul, Minnesota 55113

REGISTERED CIVIL ENGINEER AND LAND SURVEYOR

## Certificate of Survey

I Hereby Certify that this plat shows a survey made by me of the property described on this plat, and that the corners are correctly placed as shown, and that all locations have been correctly shown.

Surveyed For *Del. Arrigani*

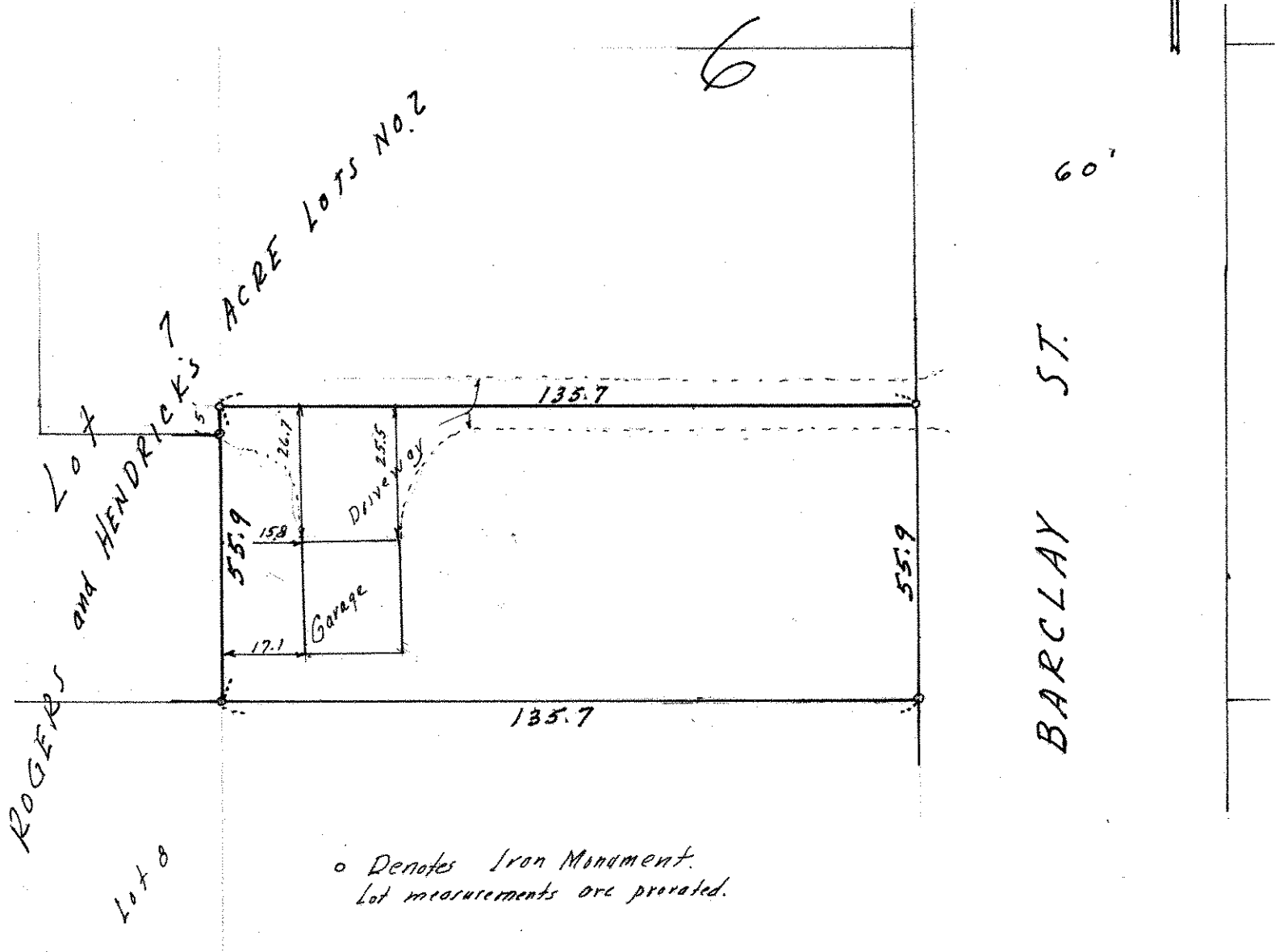
Date *July 1970*

Scale *1" = 30'*

By *Charles O. Georgi*  
REGISTERED LAND SURVEYOR

### Description:

The South 55.9 feet of the East 135.7 feet of Lot 7,  
Block 6, Rogers and Hendrick's Acre Lots No 2  
St Paul, Ramsey County, Minn.



o Denotes Iron Monument.  
Lot measurements are provided.