

FROM THE OFFICE OF

# CHARLES O. GEORGI COMPANY

2215 West County Road B

Saint Paul, Minnesota 55113

REGISTERED CIVIL ENGINEER AND LAND SURVEYOR



I Hereby Certify that this plat shows a survey made by me of the property described on this plat, and that the corners are correctly placed as shown, and that all locations have been correctly shown.

Surveyed For Del Arrigoni

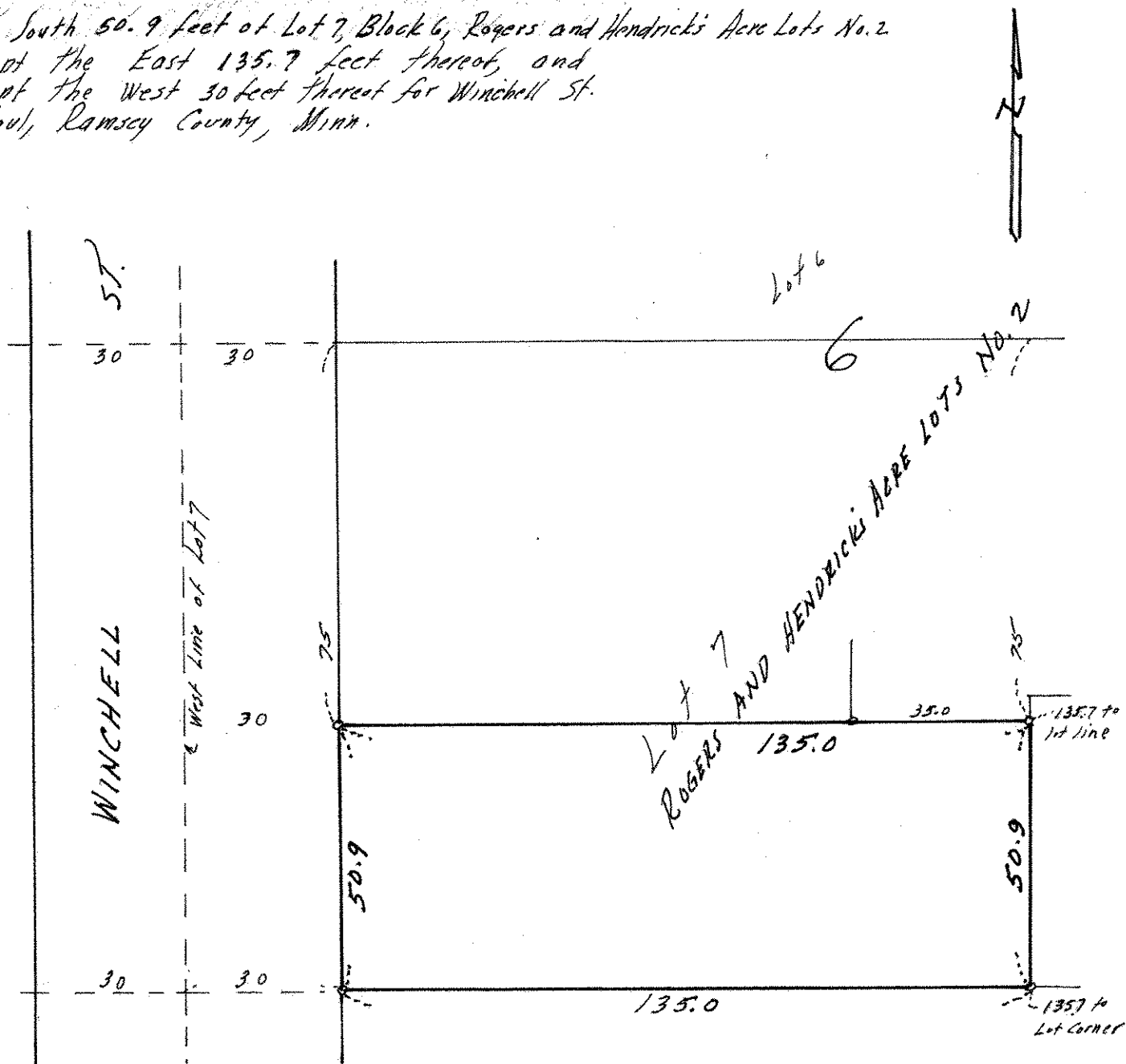
Date July 1970

Scale 1" = 30'

By Charles O. Georgi  
REGISTERED LAND SURVEYOR

**Description:**

The South 50.9 feet of Lot 7, Block 6, Rogers and Hendricks Acre Lots No. 2 except the East 135.7 feet thereof, and except the West 30 feet thereof for Winchell St. St Paul, Ramsey County, Minn.



o Denotes Iron Monument  
Lot measurements are prorated.

Lot 8