

FROM THE OFFICE OF

# CHARLES O. GEORGI COMPANY

2215 West County Road B

Saint Paul, Minnesota 55113

REGISTERED CIVIL ENGINEER AND LAND SURVEYOR

## Certificate of Survey

I Hereby Certify that this plat shows a survey made by me of the property described on this plat, and that the corners are correctly placed as shown, and that all locations have been correctly shown.

Surveyed For *Rt. W. Realty - R. Walker*

Date *June 1969*

Scale *1" = 40'*

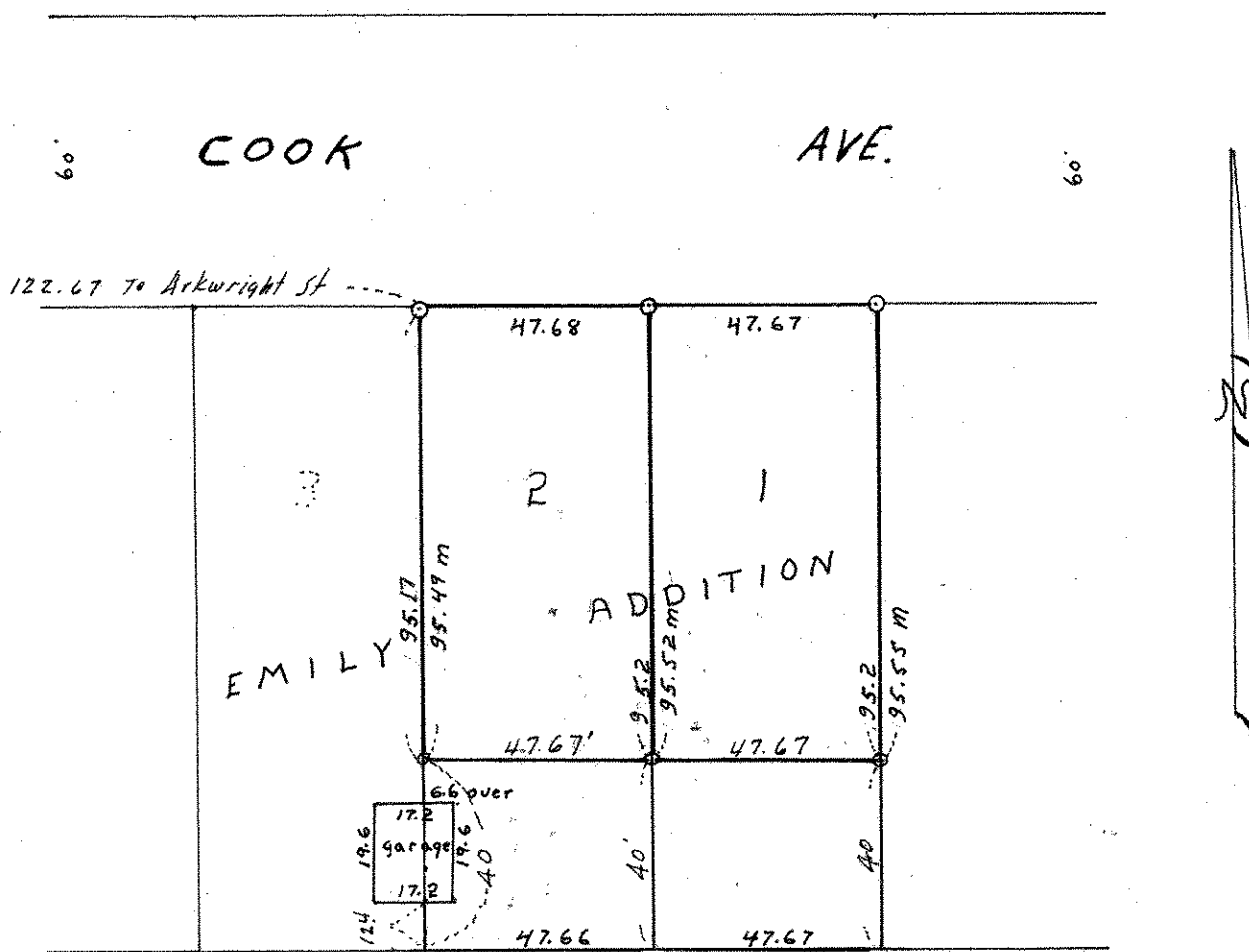
By *Charles O. Georgi*  
REGISTERED LAND SURVEYOR

**Description:**

*Lot 1 except the South 40 feet thereof, and  
Lot 2 except the South 40 feet thereof;*

*Emily Addition,*

*Ramsey County Minn.*



O denotes iron monument  
M denotes distance as prorated