

FROM THE OFFICE OF NE 18 29 22

CHARLES O. GEORGI COMPANY

2215 West County Road B

Saint Paul, Minnesota 55113

REGISTERED CIVIL ENGINEER AND LAND SURVEYOR

Certificate of Survey

I Hereby Certify that this plat shows a survey made by me of the property described on this plat, and that the corners are correctly placed as shown, and that all locations have been correctly shown.

Surveyed For Alex Heaver

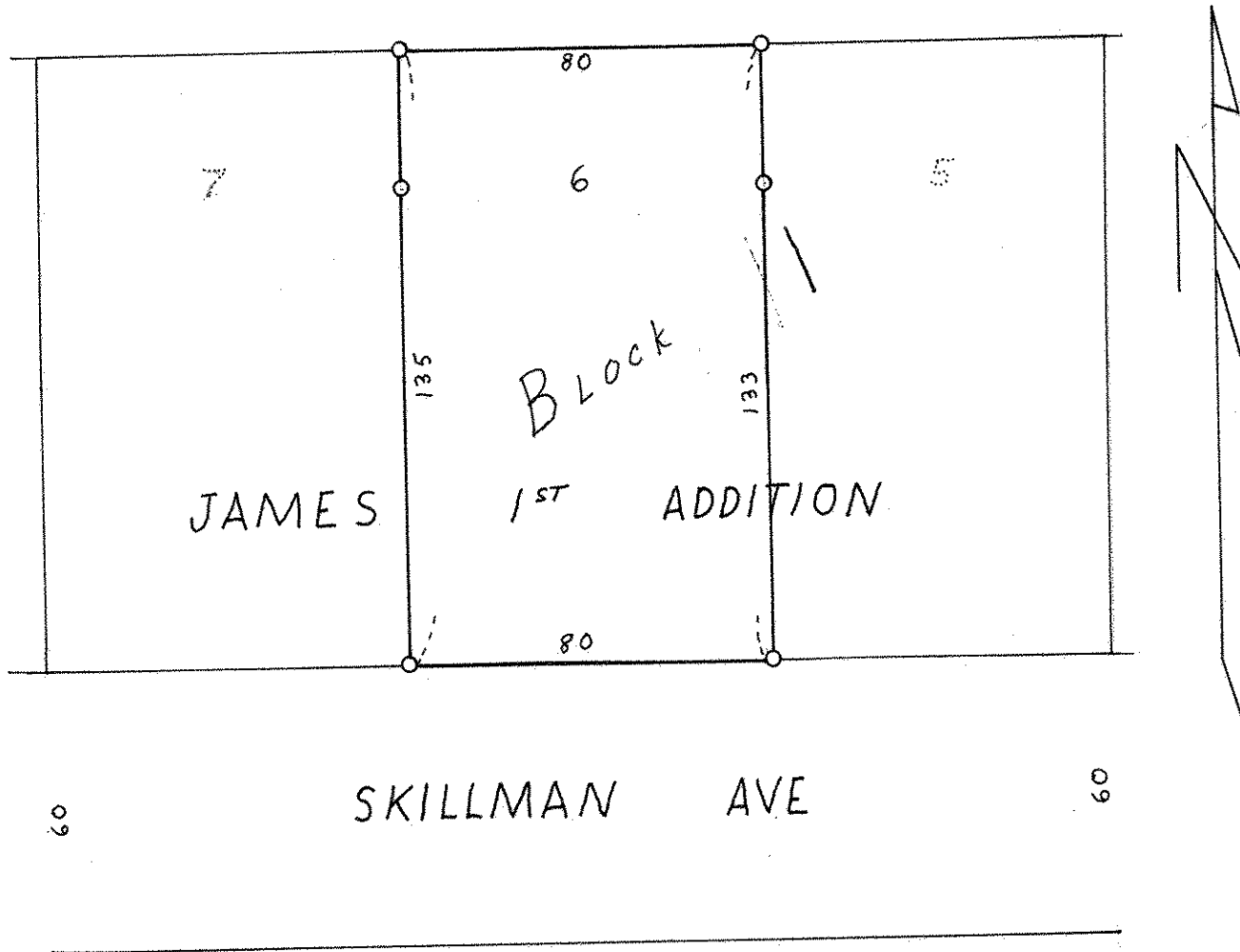
Date July 1972

Scale 1" = 40'

By Charles O. Georgi
REGISTERED LAND SURVEYOR

Description: 141 E Skillman Ave

Lot 6, Block 1, James 1st Addition, Subject to easments of record
Ramsey County, Minnesota



○ Denotes Iron Monument