

FROM THE OFFICE OF

# CHARLES O. GEORGI COMPANY

2215 West County Road B

Saint Paul, Minnesota 55113

REGISTERED CIVIL ENGINEER AND LAND SURVEYOR



*I Hereby Certify that this plat shows a survey made by me of the property described on this plat, and that the corners are correctly placed as shown, and that all locations have been correctly shown.*

Surveyed For *Building Coordinators*

Date *December 1974*

Scale *1" = 40'*

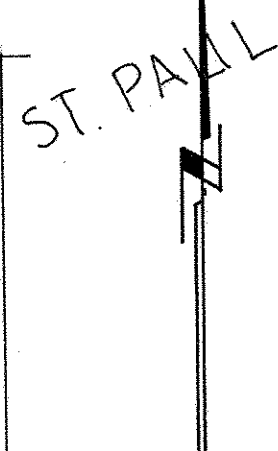
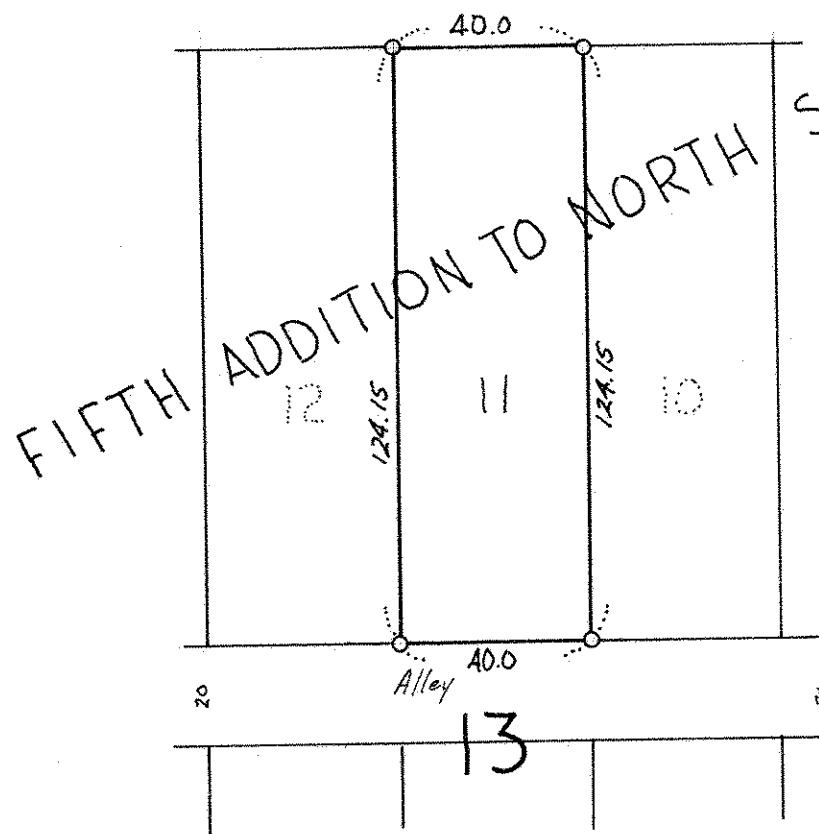
By *Donald W. Schmidt*  
REGISTERED LAND SURVEYOR

**Description:**

*Lot 11,  
Block 13,  
Fifth Addition to North St. Paul,  
Ramsey County,  
Minnesota.*



60 ELDRIDGE AVE. 60



*o denotes iron pipe monument*