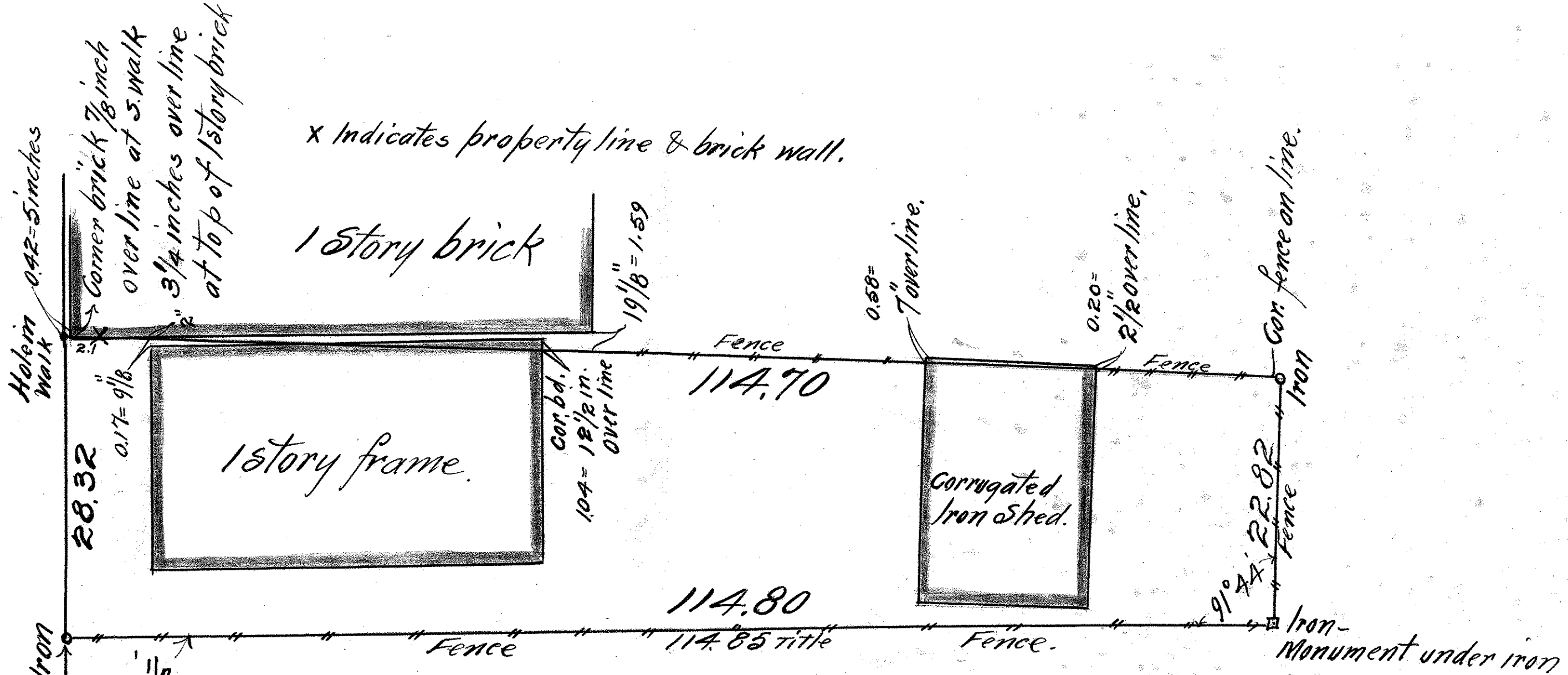


Scale 10 ft. per. in.

WABASHA ST.



x Indicates property line & brick wall.

1 story brick

1 story frame.

Corrugated Iron Shed.

410.25 ft to the North east corner Wabasha & College.

I hereby certify to having Surveyed part of block 2. Bazilles Addition to St Paul as described in Torrens Title No 10157 and located the buildings and fences near or thereon as shown by this map. and the same is correct.

Sept. 6th 1918

John P. Irvine, Surveyor.
St. Paul, Minn.

Scale 10 ft. per. inch.

Sept 6. - 1918.

Surveyed for Henry Judovitz

Sept 6-1918.