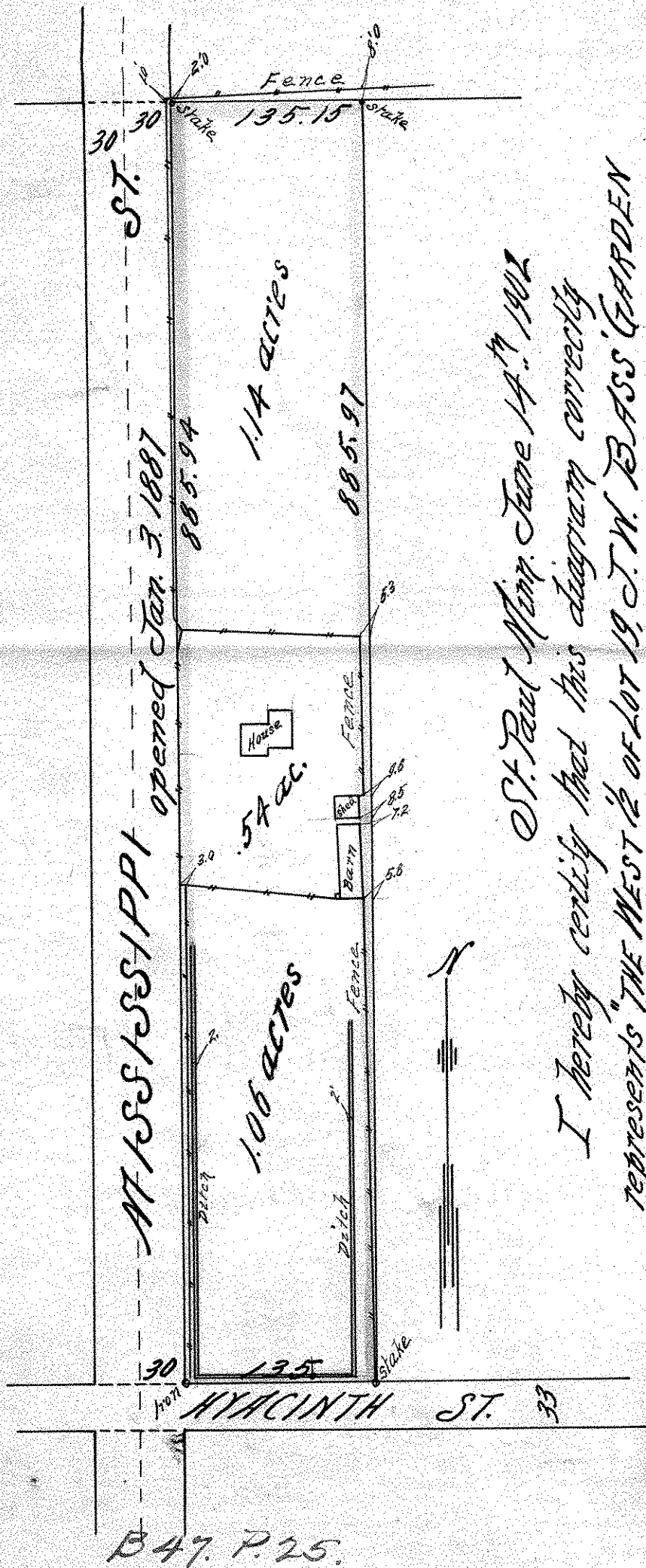


WEST 1/2 OF LOT 19
 J. W. BASS' GARDEN LOTS
 scale 100 feet pr inch



St. Paul Miss. June 14th 1902
 I hereby certify that this diagram correctly
 represents "THE WEST 1/2 OF LOT 19, J. W. BASS' GARDEN
 LOTS" as surveyed by me this day.

County Surveyor Room 16 Court House.

JOHN B. IRVIN.
 Co. Surveyor, R. 16, Court House.