

STREET, SIDEWALK & SEWER GRADES

for

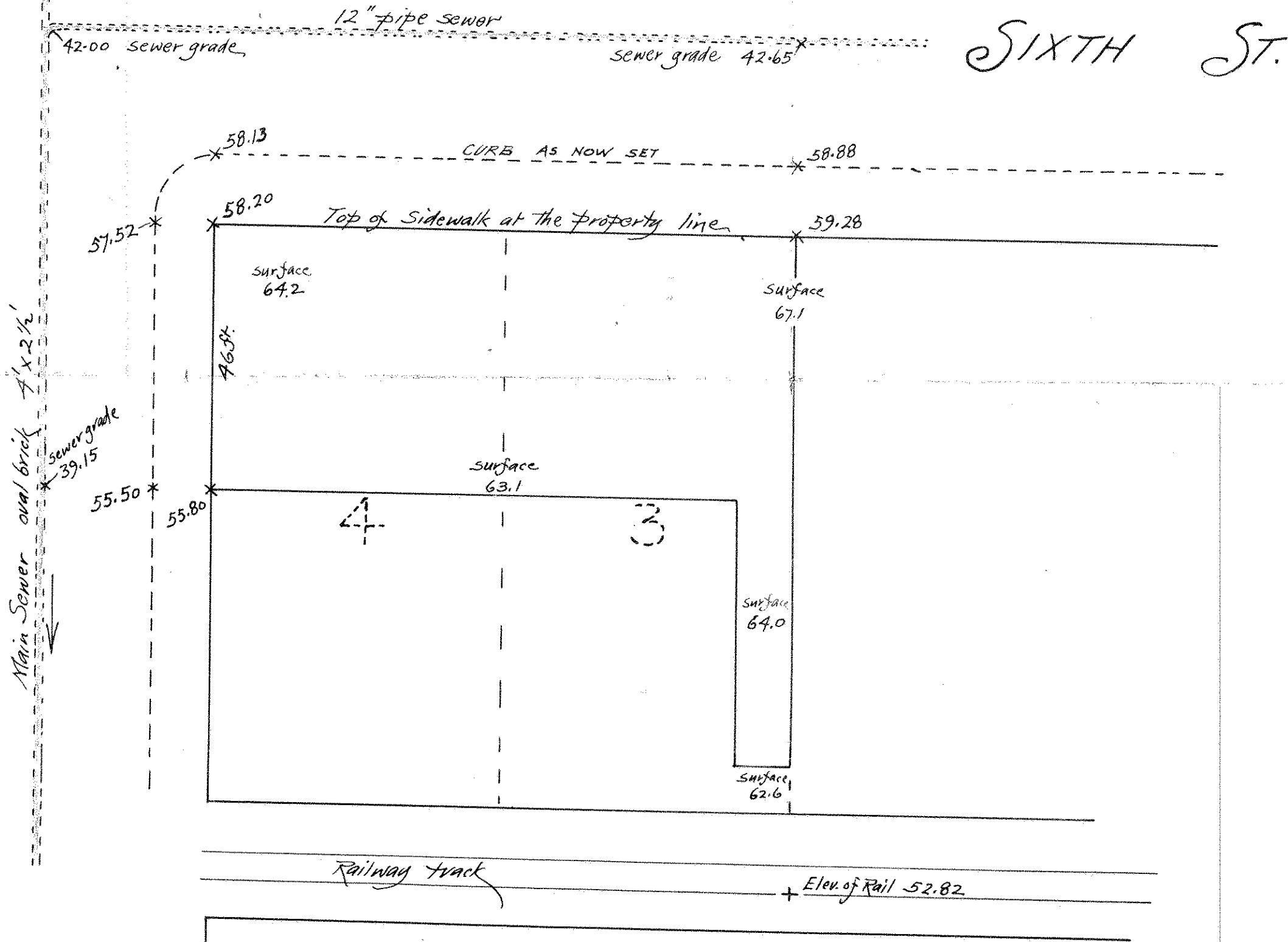
NELSON MORRIS & CO.,

CHICAGO.

SURVEYED BY
FOWBLE & FITZ,
CIVIL ENGINEERS AND SURVEYORS,
Room 34 Union Block,
ST. PAUL.

SCALE, 20 FT. PER INCH.
APRIL 13, 1900.

BROADWAY



Office of City Engineer.

St. Paul, April 13, 1900.

The grades indicated on this diagram
are in accordance with the records of this
office, and are hereby approved.

Geo. R. Wilson
ASST. CITY ENGINEER