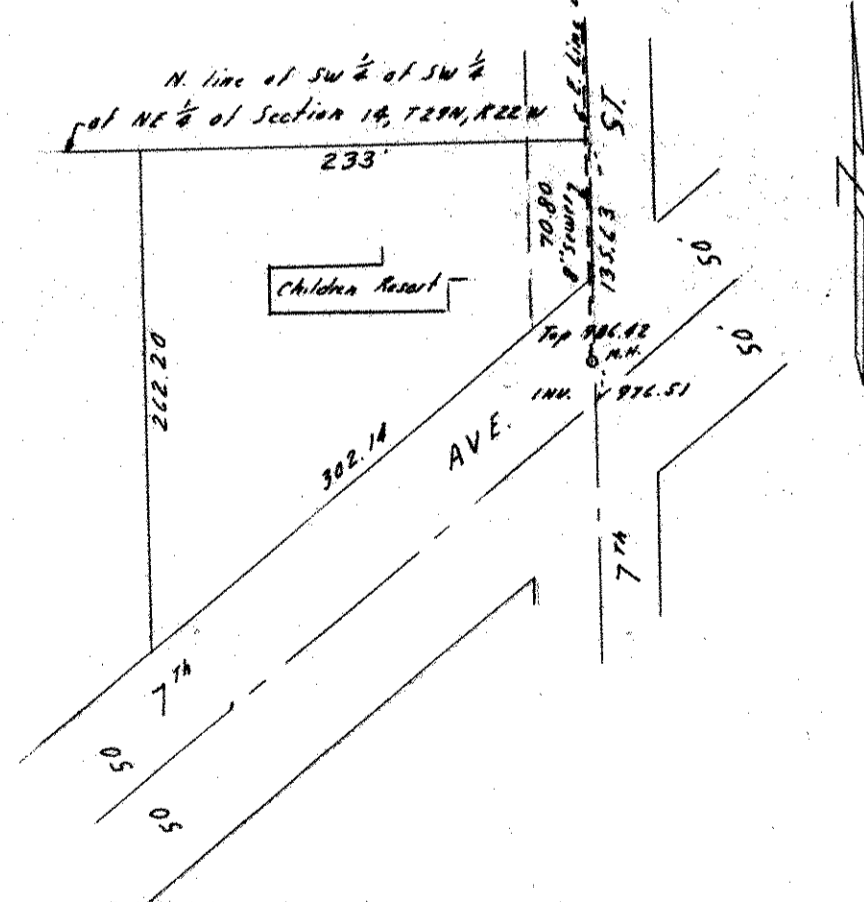


HOUSE & CHILDREN
RESORT BUILDING
1ST FLOOR ELEV. 82.12



DETAIL A
1" = 100'

SITE MAP

7TH AVE. & 7TH ST.
NORTH ST. PAUL, MINN.

SCALE 1" = 20'

Description:
All that part of the SW 1/4 of the SW 1/4 of the NE 1/4 of Section 14, T29N, R22W, lying North of 7th Ave., except the West 100 feet thereof and except the Eastern 233 feet thereof, Ramsey County, Minn.

Notes:
B.M. Elevation = 94.65 Top hydrant on the NE corner of 7th Ave. and 7th St.
B.M. 97 Denote Elev 94.97
Denote Iron Monument
All Elevations on U.S.C. Datum
For proposed Sewer and Water consult Village Existing Sewer shown in detail A

Charles O. George Company
Civil Engineering & Land Surveying
2215 W. Co. Rd. B. St. Paul, Minn.
Jan 1966