

SW 10, 29, 22

FROM THE OFFICE OF

# CHARLES O. GEORGI COMPANY

2215 West County Road B

Saint Paul 13, Minnesota

REGISTERED CIVIL ENGINEER AND LAND SURVEYOR

## Certificate of Survey

I Hereby Certify that this plat shows a survey made by me of the property described on this plat, and that the corners are correctly placed as shown, and that all locations have been correctly shown.

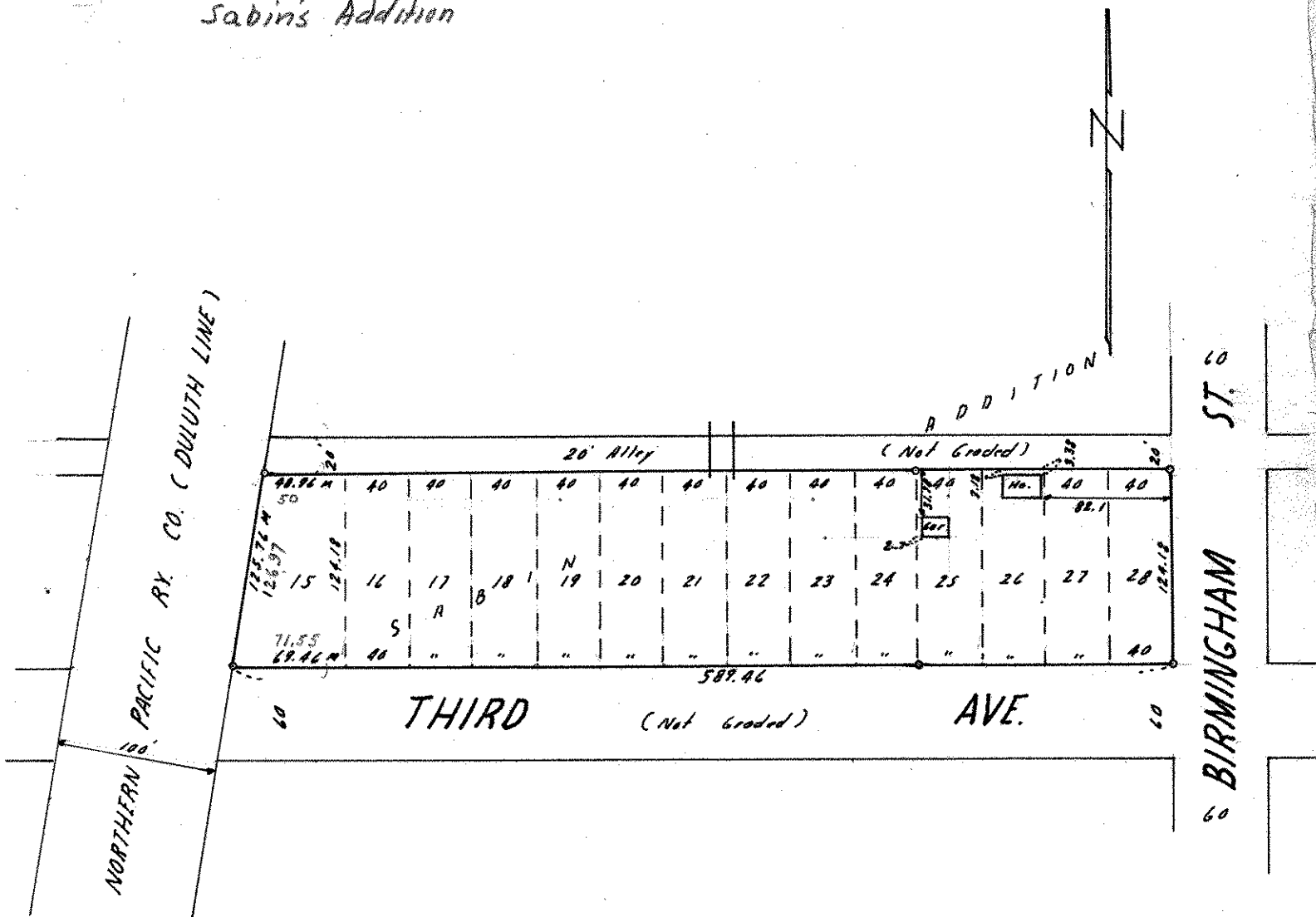
Surveyed For John Kane

Date July 1965

Scale 1" = 100'

By Charles Georgi  
REGISTERED LAND SURVEYOR

Description: Lots 15 to 28  
Block 11  
Sabin's Addition



o Denotes Iron Monument  
M Denotes Measured Distance