

FROM THE OFFICE OF

# CHARLES O. GEORGI COMPANY

2215 West County Road B

Saint Paul 13, Minnesota

REGISTERED CIVIL ENGINEER AND LAND SURVEYOR



I Hereby Certify that this plat shows a survey made by me of the property described on this plat, and that the corners are correctly placed as shown, and that all locations have been correctly shown.

Surveyed For Ben H. Kryzer

Date April 1965

Scale 1" = 50'

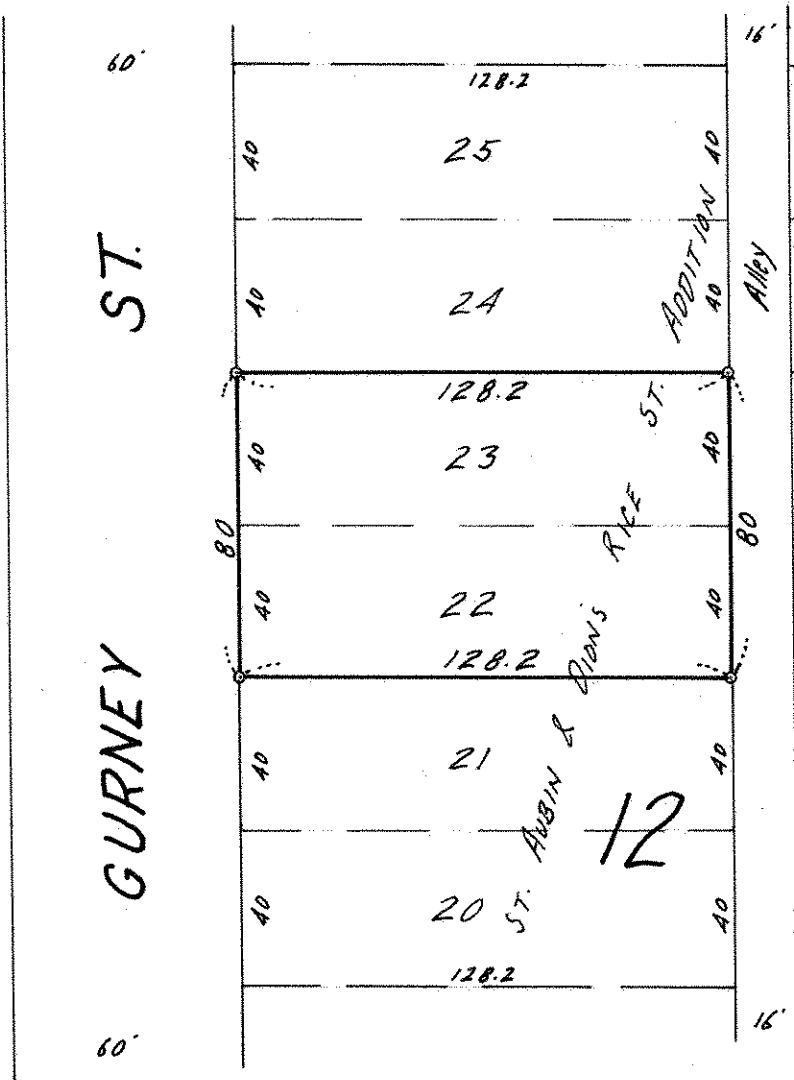
By Charles O. Georgi  
REGISTERED LAND SURVEYOR

**Description:**

Lots 22 and 23.

Block 12,

St. Aubin and Dion's Rice Street Addition to City of St. Paul.



o Denotes Iron Monument