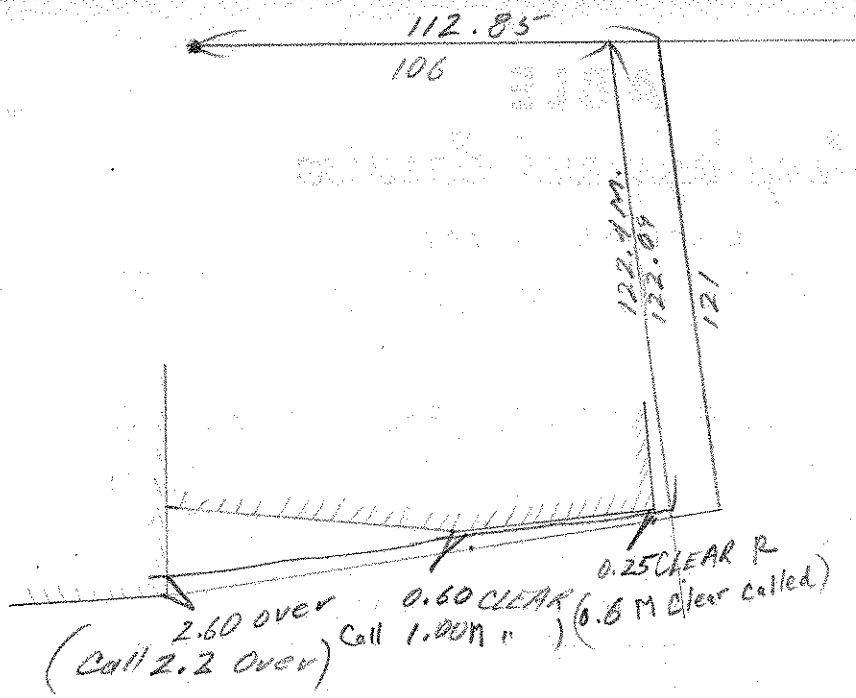


150.43M
150R

2.30
2.30
2.30



96.56
8.54-16
103.50-16
179.59-60
103.50-16
76-09-44
13.50-16

.00-15419
179998917
N. 89-44 E 112.85
S. 6-54-16 E. 121.00
S. 76-09-44 W 7.43
N. 13-50-16 E. 0.61
28.00 28.23917372
9.58 9.7097679
37.58
S. 76-09-44 W 37.83
N. 13-50-16 E. 1.54

9.48
12.87
2.39
29.10
N. 89-44 E 106
S. 6-54-16 E 122.09
S. 77-38-30 W. 2.6
S. 77-38-30 W 31.0

	N	S	E	W
			112.85	
		120.12	14.55	
		225		9.15
	0.59		0.15	
	1.12	122.37 121.25	127.55 9.15 118.40	9.15
		9.05		36.73
	1.50		0.37	
	2.03	129.17 2.03 127.14	127.77 36.73 91.04	36.73
	0.49		106.00 14.68	
		121.20 0.56		2.54
	.49	121.76 4.9 121.27	120.68 2.54 118.14	2.54
		6.63		30.28
	0.49	127.83 4.9 127.34	120.68 30.28 90.40	30.28

