

FROM THE OFFICE OF

CHARLES O. GEORGI COMPANY

2215 West County Road B

Saint Paul, Minnesota 55113

REGISTERED CIVIL ENGINEER AND LAND SURVEYOR

Certificate of Survey

I Hereby Certify that this plat shows a survey made by me of the property described on this plat, and that the corners are correctly placed as shown, and that all locations have been correctly shown.

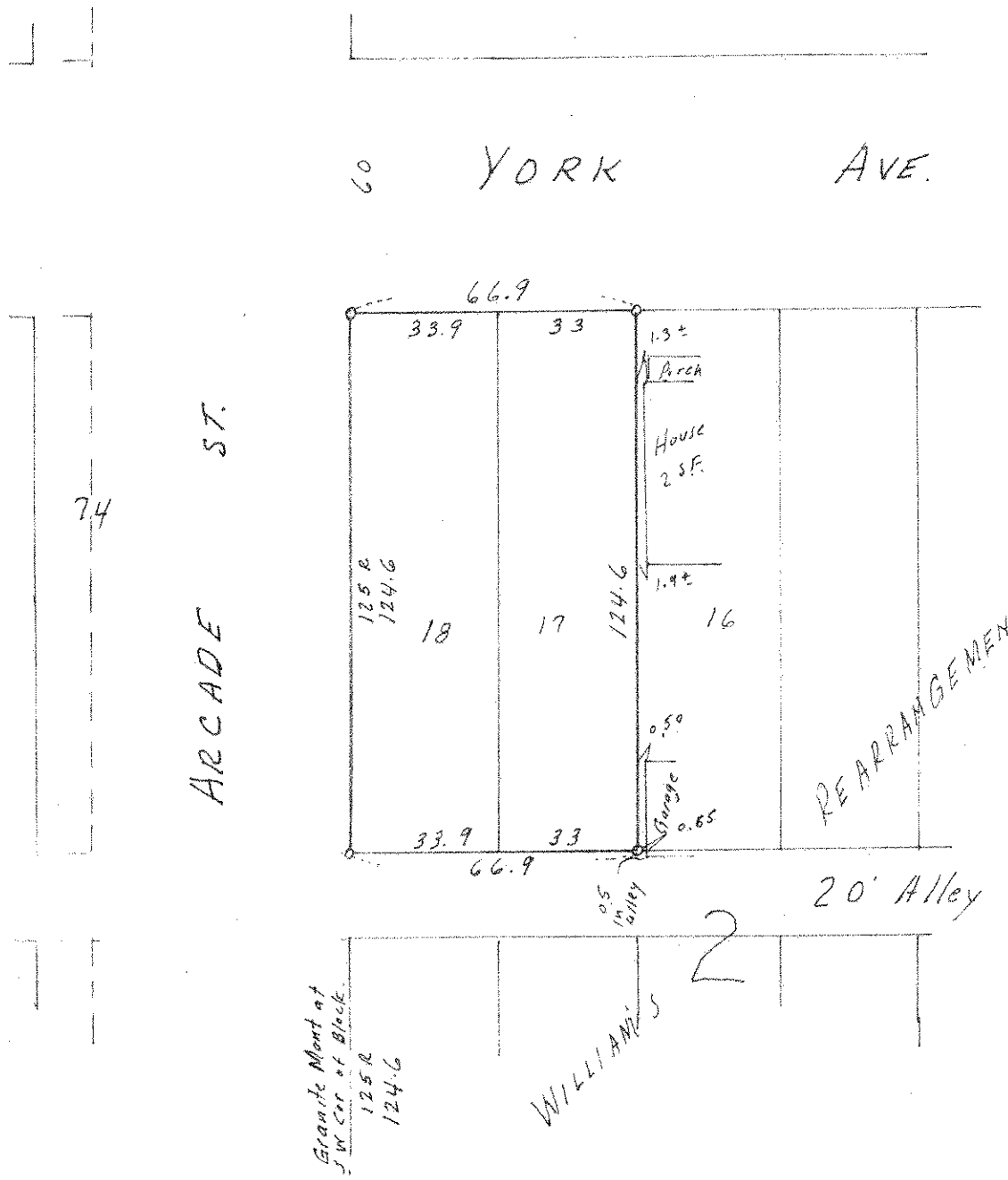
Surveyed For.....WHIRLPOOL.....CORP.

Date.....May.....1968

Scale.....1" = 40'

By.....*Charles O. Georgi*
REGISTERED LAND SURVEYOR

Description: Lots 17 and 18
Block 2
WILLIAMS' REARRANGEMENT OF BLOCK 2
and PARTS OF BLOCKS OF NELSONS ADDITION



Note:
There is a 2.0 foot
excess in Lot 1
old survey & apparent
occupancy used record
distances from Arcade.

o Denotes Iron Pipe
Monument.