

BOUNDARY SURVEY and TOPOGRAPHIC MAP

FOR CITY OF ST. PAUL, DEPT. OF PLANNING AND ECONOMIC DEVELOPMENT

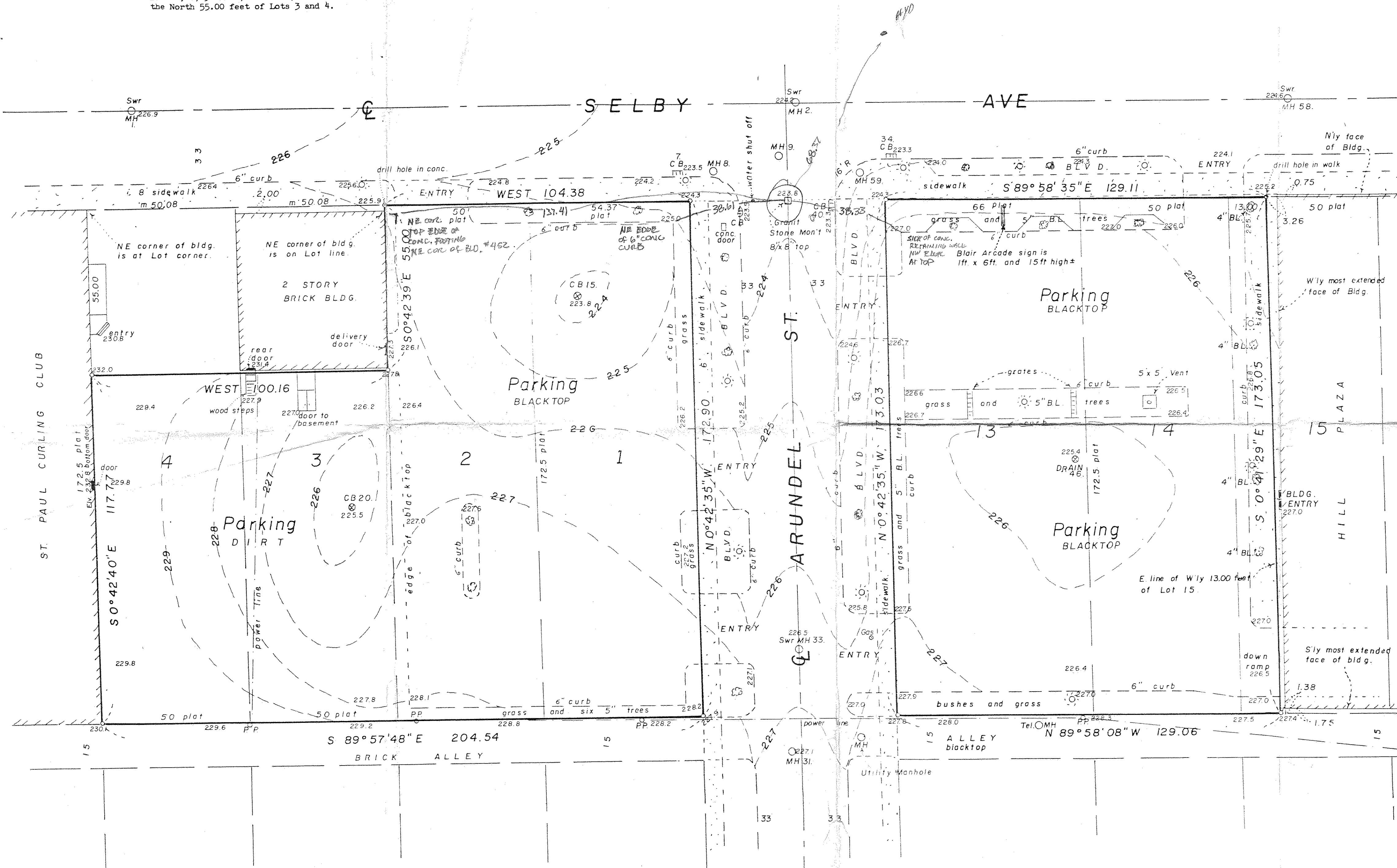
DESCRIPTIONS:

PARCEL EAST OF ARUNDEL STREET
 Lots 13 and 14 and the West 13.00 feet of Lot 15,
 COCHRAN'S Subdivision and Addition to Block 11 of
 Woodland Park.

PARCEL WEST OF ARUNDEL STREET
 Lots 1, 2, 3 and 4, Block 10, WOODLAND PARK, except
 the North 55.00 feet of Lots 3 and 4.



SCALE
 1 inch = 20 feet



- NOTES**
- Bearings are assumed
 - indicates iron pipe set with cap 14946
 - indicates light pole
 - ⊗ indicates 5 inch Broadleaf Trees
 - PP indicates Power Pole
 - ▭ indicates retaining wall containing tree and shrubs.
 - 4" BL is 4" Broadleaf trees in sidewalk.

REVISION OF 3/14/88 ADDS:

Swr MH at Centerline Selby N. of Hill Plaza
 Gas valve at SW entry to Hill Plaza Parking
 Door on E side of Curling Club
 Spot Elevations are at St. Paul Datum (ex. 231.4)
 Curb Elev. are all at top of 6" curbs (subt. 6" for gutter)
 1 ft contours are shown
 Manhole Rim and Inv. Elevations
 Catch Basin Rim and Inv. Elevations
 Benchmark is Granit Stone Mon't. at Centerline of Arundel
 and South right-of-way Selby - Elev. 223.79

Sanitary Sewer Manholes:

1. Rim 226.95 Inv 215.44 runs from W to E
2. Rim 224.24 Inv 212.90 runs from W, S & E to N
58. Rim 224.65 Inv 214.63 dry from E to W
33. Rim 226.55 Inv 215.44 runs from S to N

Storm Manholes:

59. Rim 223.95 Inv 219.8 runs from SW, SE, & NE to NW
9. Rim 223.88 Inv 219.7 runs from W & S to N
8. Rim 223.61 Inv 220.3 runs from SW to NE
31. Rim 227.10 Inv 221.9 runs from E to N

Catch Basins:

34. Rim 223.26 Inv 220.4
40. Rim 223.26 Inv 219.8 outlet to NW
7. Rim 223.54 Inv 221.1
46. (drain) Rim 225.40 Inv 221.2
15. Rim 223.82 Inv 220.9 outlet to NE
20. Rim 225.52 Inv 222.2 outlet to NE

REVISION OF 4/01/88 ADDS:

- Blair Arcade sign.
- 3 - retaining walls at N end Hill Plaza lot.
- 4 - 4" Broadleaf trees in Plaza sidewalk.

I hereby certify that this survey, plan, or report was prepared by me or under my direct supervision and that I am a duly Registered Land Surveyor under the laws of the State of Minnesota.

Curt Leavitt
 Date Mar 9, 1988 Reg. No. 14946