

**Certificate
of Survey**

I Herby Certify that this plat shows a survey made by me of the property described on this plat, and that the corners are correctly placed as shown, and that all locations, encroachments, etc., have been correctly shown.

Surveyed For PART AUTHORITY OF CITY OF ST. PAUL
Date AUGUST 1959
Scale 1"=100'

By Charles O. Georgi
REGISTERED LAND SURVEYOR

OLD HARBOR LINE DATA

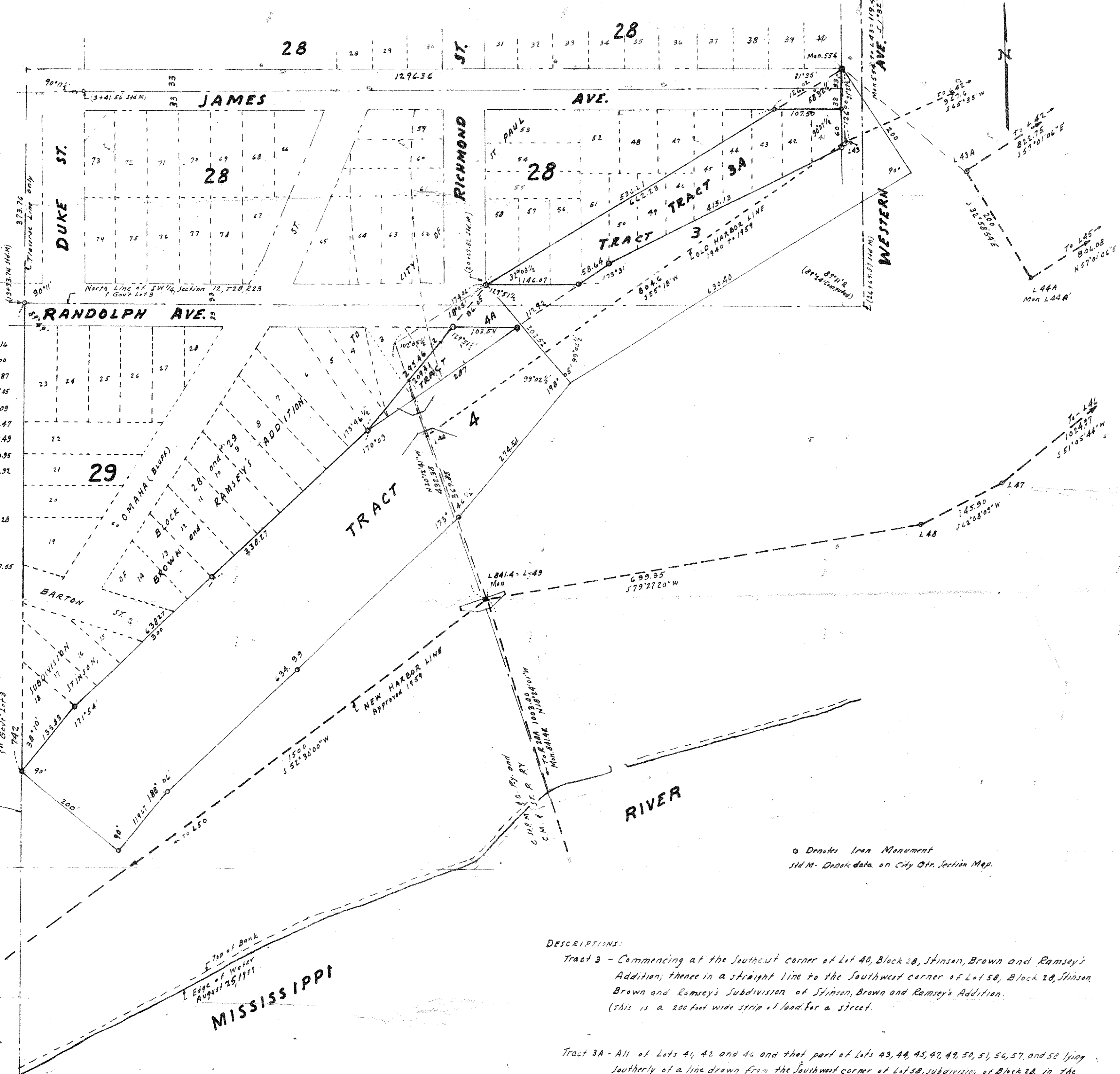
point	Bearing	Dist	Lat.	Dep.
L42	S65°35'W	947.6	N706,907.0	E2,129,882.3
L43	S55°18'W	804.6	N703,907.0	E2,229,001.3
L44			N703,449.0	E2,228,337.8
Mon 554	S1°32'E	119.4	N704,064.4	E2,228,998.1
L43				

NEW HARBOR LINE DATA

L42	S57°10'W	822.75	N706,307.88	E2,229,880.16
L43A	S32°58'58"E	200.00	N703,860.00	E2,229,170.00
L44A	N57°10'06"E	806.08	N703,692.23	E2,229,128.87
L45	S34°19'31"E	141.95	N704,181.04	E2,229,915.05
L46	S51°05'44"W	1024.97	N704,013.81	E2,230,055.09
L47	S62°08'09"W	145.95	N703,370.11	E2,229,257.47
L48	S78°27'26"W	699.35	N703,301.92	E2,229,128.43
Mon L49	S52°30'00"W	1500.00	N703,173.94	E2,228,440.35
L50			N703,260.50	E2,227,250.32

Mon 554	S49°11'31"E	256.62	N704,027.14	E2,228,995.18
L43A				
Mon R18A	N10°12'41"W	1009.00	N702,222.22	E2,228,757.55
Mon L49	(Computed)			

Notes:
Coordinates, Bearing & R & L points by U.S. Army, Corps of Engineers based on Lambert Grid for Minnesota
point 554 - Monument at James & Western has different coordinates by 1959 Harbor Line data & old Harbor Line data. This Monument has been removed and re-established by City
This survey is tied in to L49 & R28A Monuments found in place.
This survey is 3rd order control, minimum.



DESCRIPTIONS:

Tract 2 - Commencing at the Southeast corner of Lot 40, Block 28, Stinson, Brown and Ramsey's Addition; thence in a straight line to the Southwest corner of Lot 58, Block 28, Stinson, Brown and Ramsey's Subdivision of Stinson, Brown and Ramsey's Addition. (This is a 200 foot wide strip of land for a street.)

Tract 3A - All of Lots 41, 42 and 46 and that part of Lots 43, 44, 45, 47, 49, 50, 51, 56, 57, and 58 lying southerly of a line drawn from the Southwest corner of Lot 58, subdivision of Block 28, in the Subdivision of Blocks 28 and 29, Stinson, Brown and Ramsey's Addition to the Southeast of Lot 40 subdivision of Block 28 in the Subdivision of Blocks 28 and 29, Stinson, Brown and Ramsey's Addition. (This tract lies within Tract 3)

Tract 4 - Commencing at the Southwest corner of Lot 58, Block 28 of Subdivision of Blocks 28 and 29, Stinson, Brown and Ramsey's Addition; thence Southwesterly in a straight line to the Southwest corner of Lot 5, Block 29, Stinson, Brown and Ramsey's Subdivision of Stinson, Brown and Ramsey's Addition, thence Southwesterly along the Northerly line of Water Street to the Southwesterly corner of Lot 18, Block 29, Stinson, Brown and Ramsey's Subdivision of Stinson, Brown and Ramsey's Addition. (This is a 200 foot wide strip of land for levee purposes)

Tract 4A - A strip of land in the dedication in the subdivision of Blocks 28 and 29, Stinson, Brown and Ramsey's Addition recorded September 14, 1857 in F Town Plats, page 15, abutting Lots 6 to 18 both inclusive, subdivision of Block 29. It includes all that part of Lots 1, 2, 3, 4 and 5 lying Easterly of a line drawn from the Southeast corner of Lot 6, subdivision of Block 29 to the Southwest corner of Lot 58, subdivision of Block 28.