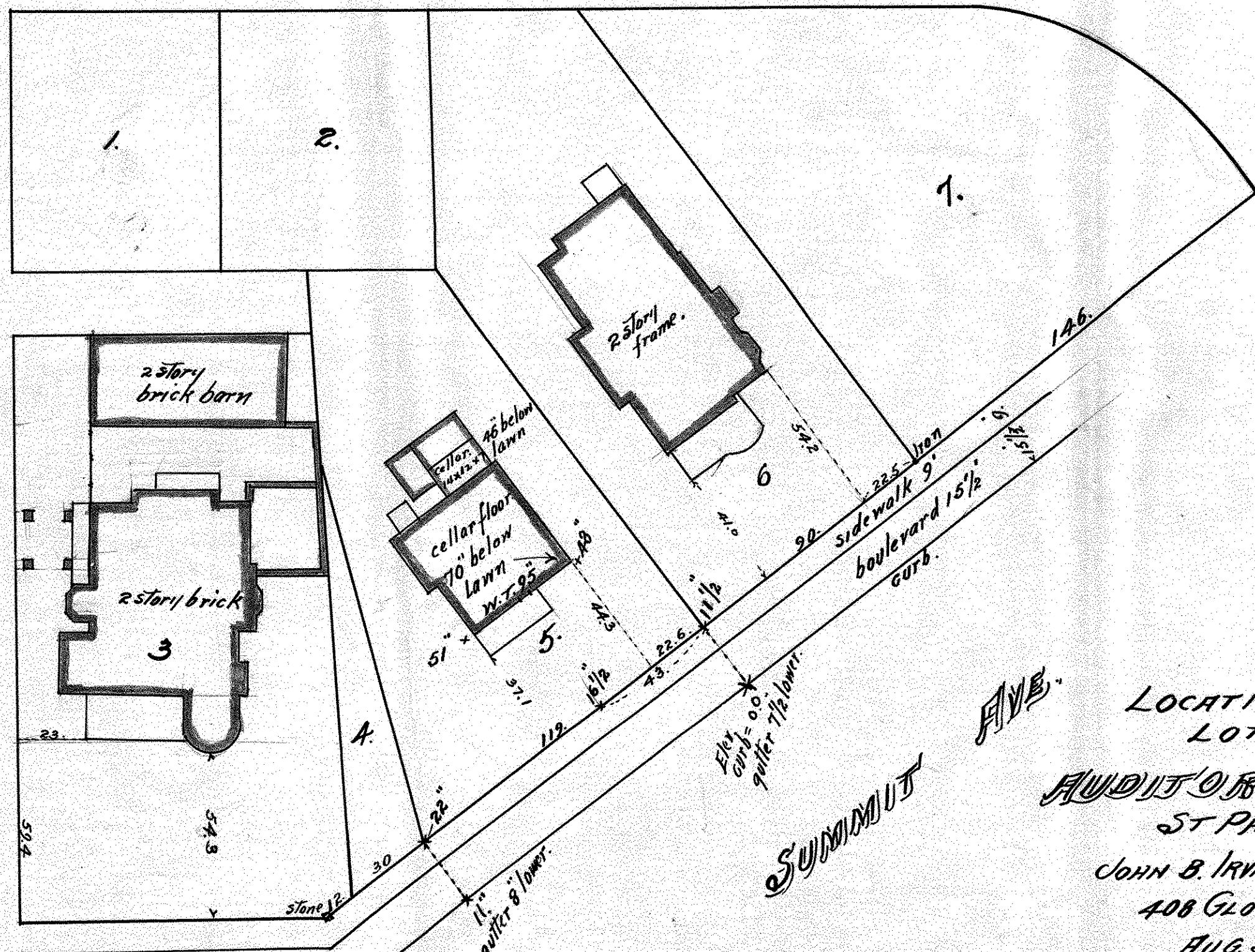


PORTLAND AVE.

ST. ARUNDEL



LOCATION OF HOUSES ON LOTS 3, 5 & 6

AUDITORS SUB'DN No 38 ST PAUL, MINN.

JOHN B. IRVINE, SURVEYOR 408 GLOBE BLDG.

AUG. 5-1912

Scale 40 ft. per inch.