

56 / 28 / 23

FROM THE OFFICE OF

CHARLES O. GEORGI COMPANY

2215 West County Road B

Saint Paul, Minnesota 55113

REGISTERED CIVIL ENGINEER AND LAND SURVEYOR

Certificate of Survey

I Hereby Certify that this plat shows a survey made by me of the property described on this plat, and that the corners are correctly placed as shown, and that all locations have been correctly shown.

Surveyed For *Mrs. M. Schaefer*

Date *May 1970*

Scale *1" = 30'*

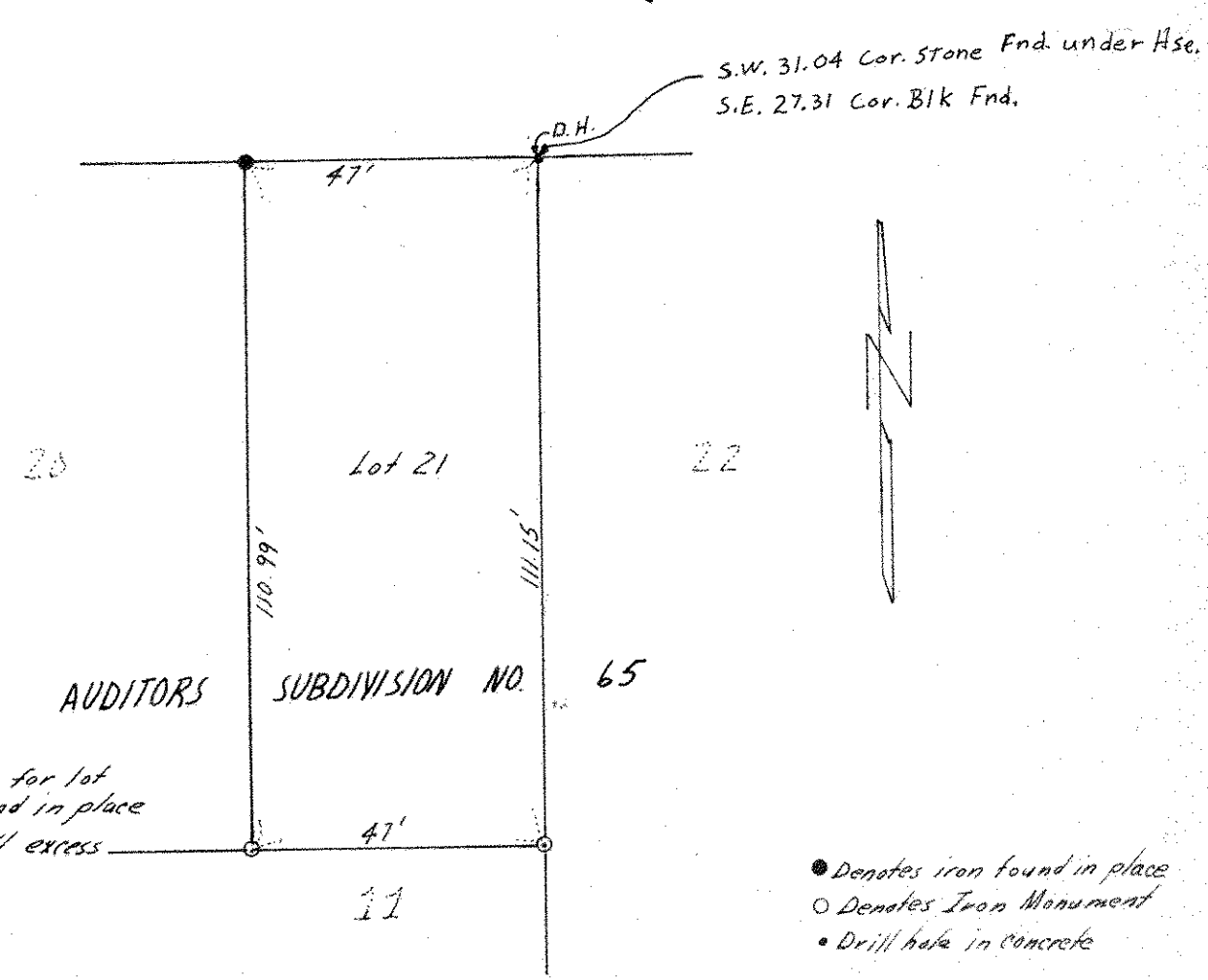
By *Charles O. Georgi*
REGISTERED LAND SURVEYOR

Description:

*Lot 21,
Auditors Subdivision No. 65
Ramsey County, Minn*

see 1/4 Sec 14 for Ties

60' STURGIS ST 60'



* Used record distances for lot to agree with irons found in place although there is a small excess in block.