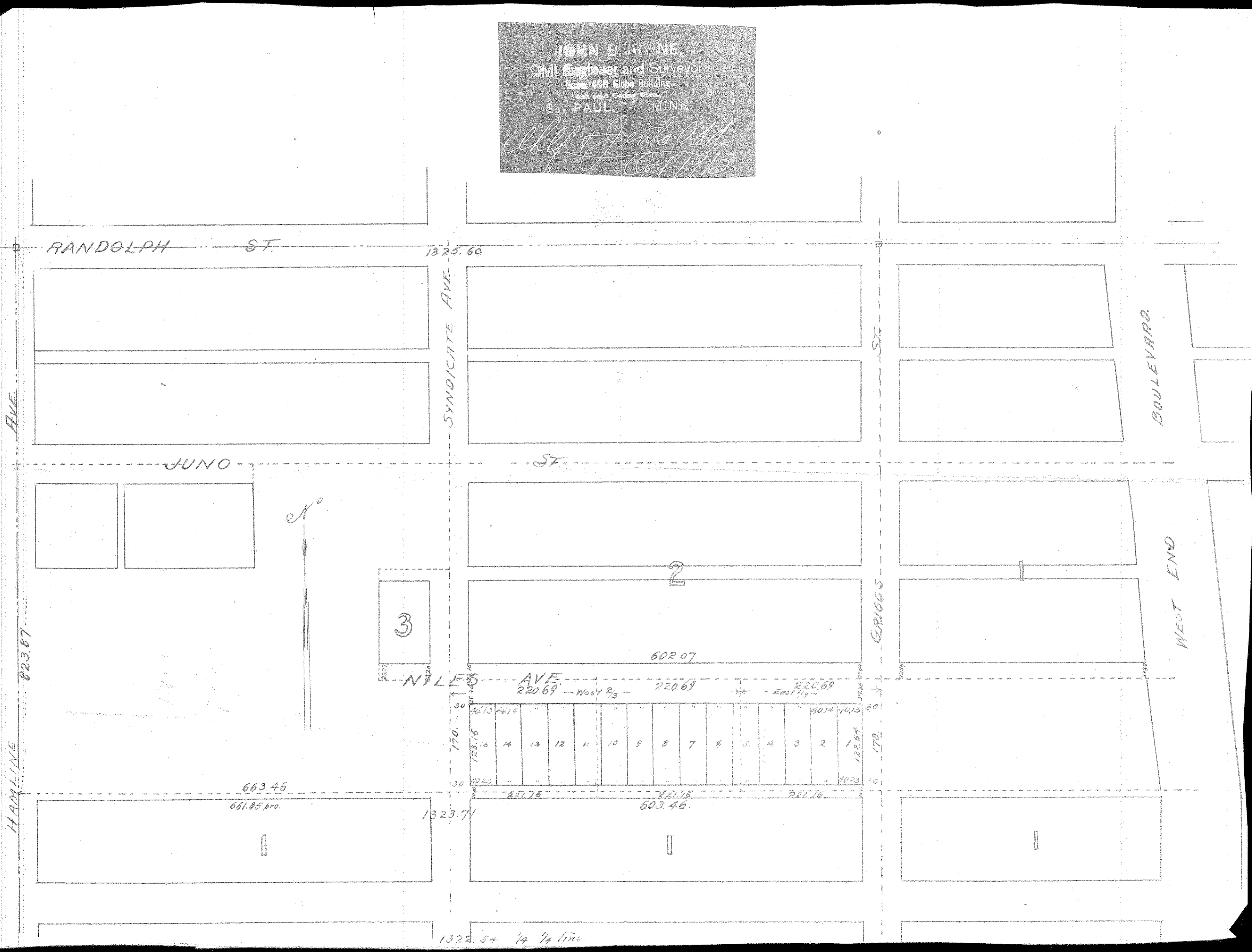


JOHN B. IRVINE,
 Civil Engineer and Surveyor,
 Room 408 Globe Building,
 14th and Cedar Sts.,
 ST. PAUL, MINN.
Chf. of Genl. Adm.
Oct 1913



RANDOLPH ST.

1325.60

SYNDICATE AVE.

JUNO ST.

ST.

2

3

602.07

NILES AVE.

220.69

West 2/3

220.69

East 1/3

220.69

| | | | | | | | | | | | | | | | | | | | | | |
|------|--------|-------|----|----|----|----|---|---|---|---|---|---|---|---|---|--------|------|--|-------|-------|----|
| 30 | 40.13 | 40.14 | | | | | | | | | | | | | | | | | 40.14 | 40.13 | 30 |
| 170. | 123.75 | 14 | 13 | 12 | 11 | 10 | 9 | 8 | 7 | 6 | 5 | 4 | 3 | 2 | 1 | 122.69 | 170. | | | | |
| 30 | 40.23 | | | | | | | | | | | | | | | 40.23 | 30 | | | | |

663.46

661.85 pro.

1323.71

603.46

1322.54 1/4 1/4 line

AVE.

823.87

HAMLIN AVE.

ST.

GRIGGS

BOULEVARD.

WEST END