

FROM THE OFFICE OF

CHARLES O. GEORGI COMPANY

2215 West County Road B

Saint Paul, Minnesota 55113

REGISTERED CIVIL ENGINEER AND LAND SURVEYOR

Certificate of Survey

I Hereby Certify that this plat shows a survey made by me of the property described on this plat, and that the corners are correctly placed as shown, and that all locations have been correctly shown.

Project No. Minn. A-1-1
Parcel No. 133-B
Area 19,437 Sq. Ft. M.O.L

Surveyed For Housing Authority

Date May 1974

Scale 1" = 40'

By

Charles O. Georgi
REGISTERED LAND SURVEYOR

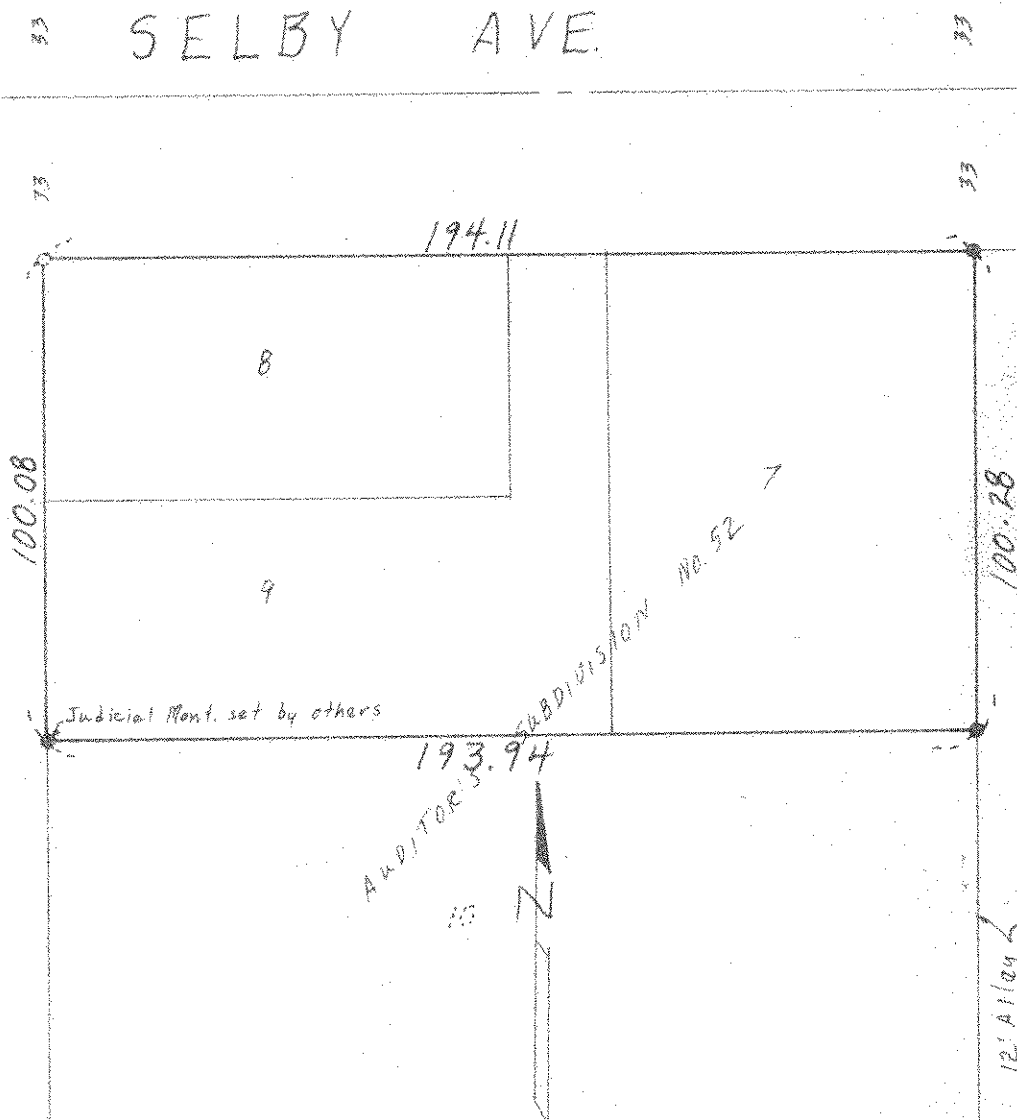
Description:

Lots 7, 8, and 9, Auditor's Subdivision No. 52,

Ramsey County, Minnesota

SELBY AVE.

NINA ST.



o Denotes Iron Monument
• Denotes Iron Monument found in place