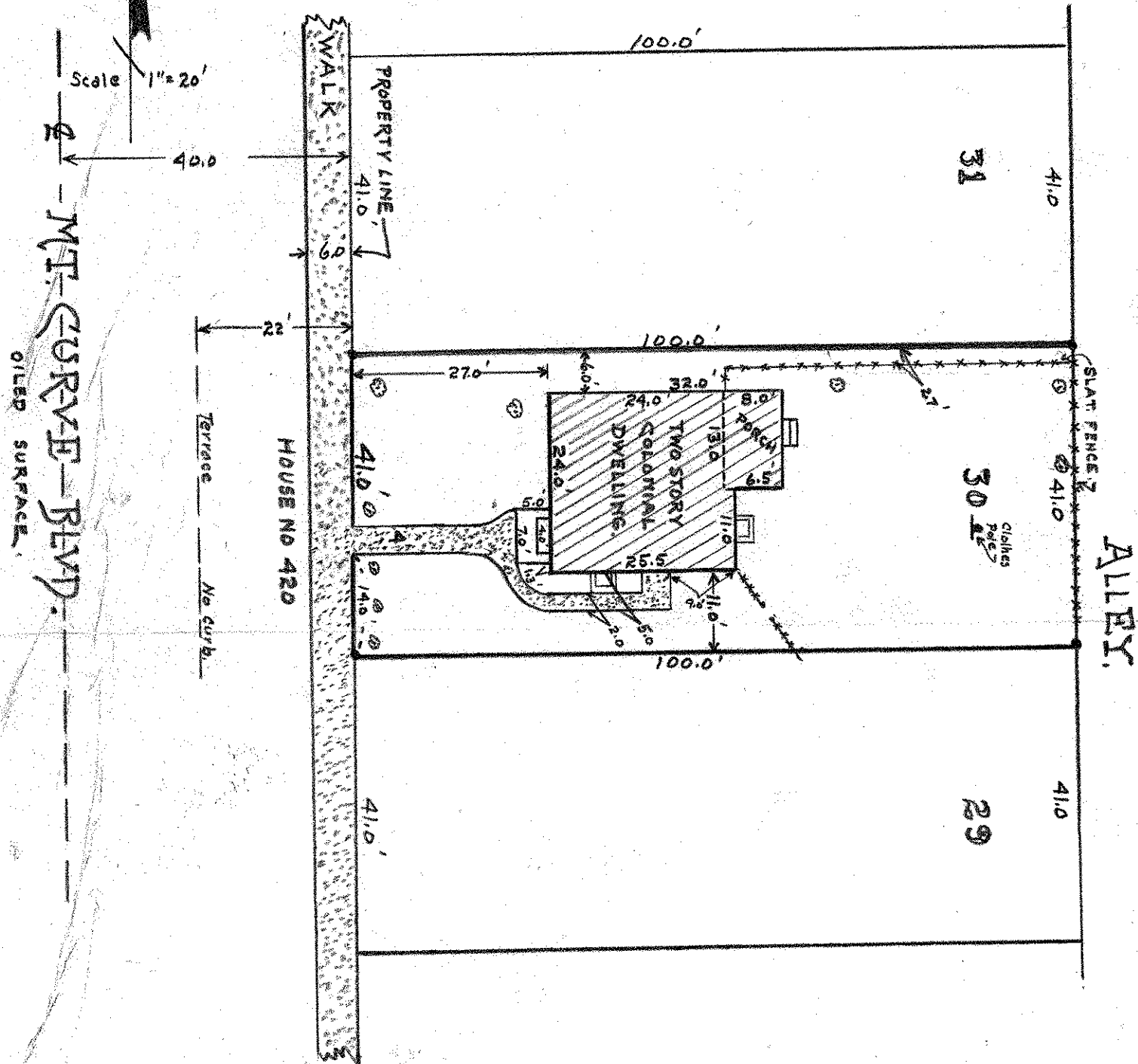


F-8-28-23



THIS IS TO CERTIFY THAT ON SEPTEMBER 9, 1936, THE BANISTER ENGINEERING CO. ST. PAUL MINN., REGISTERED PROFESSIONAL ENGINEERS, SURVEYED THE PROPERTY DESCRIBED AS LOT 30, BLOCK 1, MISSISSIPPI VIEW, BEING AUDITORS SUBDIVISION # 59, ST. PAUL MINN. THAT THE BUILDINGS ON SAID PROPERTY ARE SHOWN RELATIVE TO THE PROPERTY LINES AND THAT THE ANNEXED PLAT IS TRUE AND CORRECT.

SIGNED *J. J. Sullivan* 9-9-36.