

# Certificate of Survey

From the office of  
**GEORGI-SCHMIDT & ASSOC. INC.**  
3092 No. Lexington Ave., Roseville, Mn. 55113  
LAND SURVEYING  
483-4408

I Hereby Certify that this plat shows a <sup>building location</sup> ~~survey~~ made by me of the property described on this plat, and that the corners are correctly placed as shown, and that all locations have been correctly shown.

Job Number: 414

Surveyed For Associated Arch.

Date July 1979

Scale 1" = 30'

By Donald W. Schmidt  
REGISTERED LAND SURVEYOR

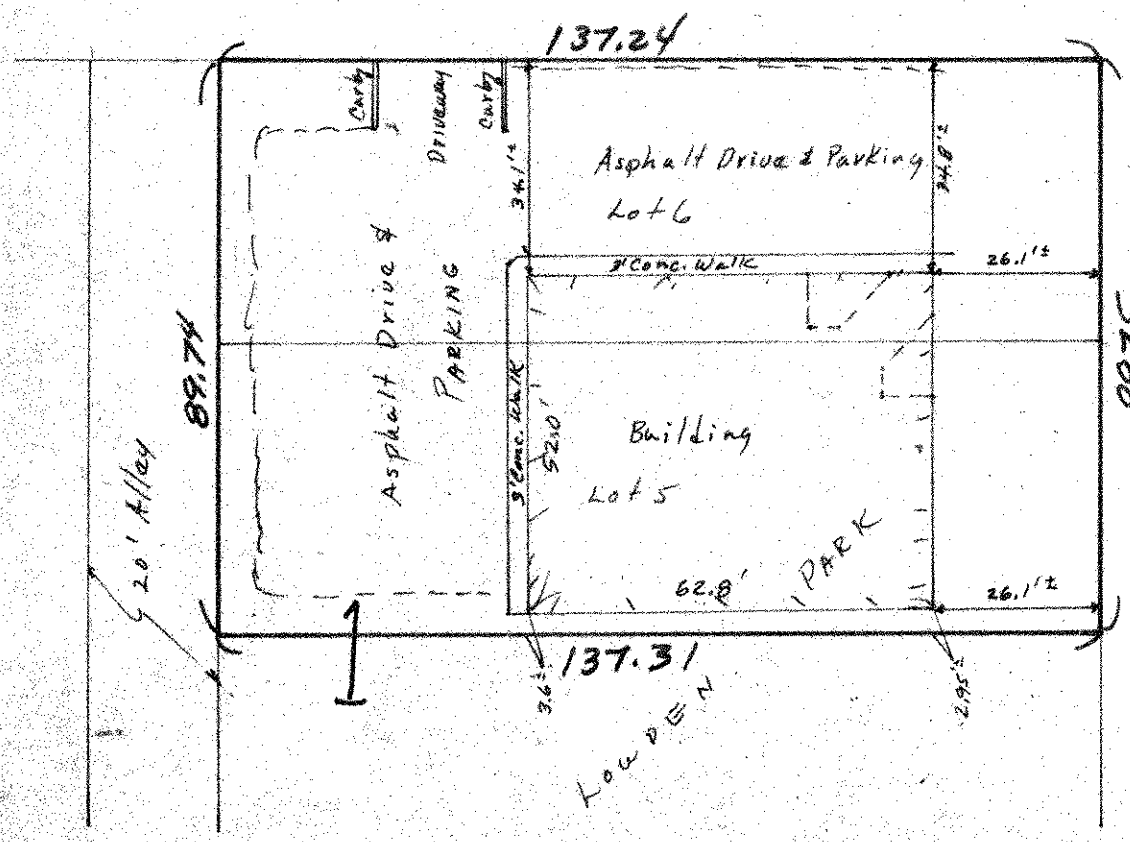
Description:

Lots 5 and 6, Block 1, Loudon Park

Ramsey County, Minnesota

ST. CLAIR AVE.

CLEVELAND AVE.



66

66

66

66