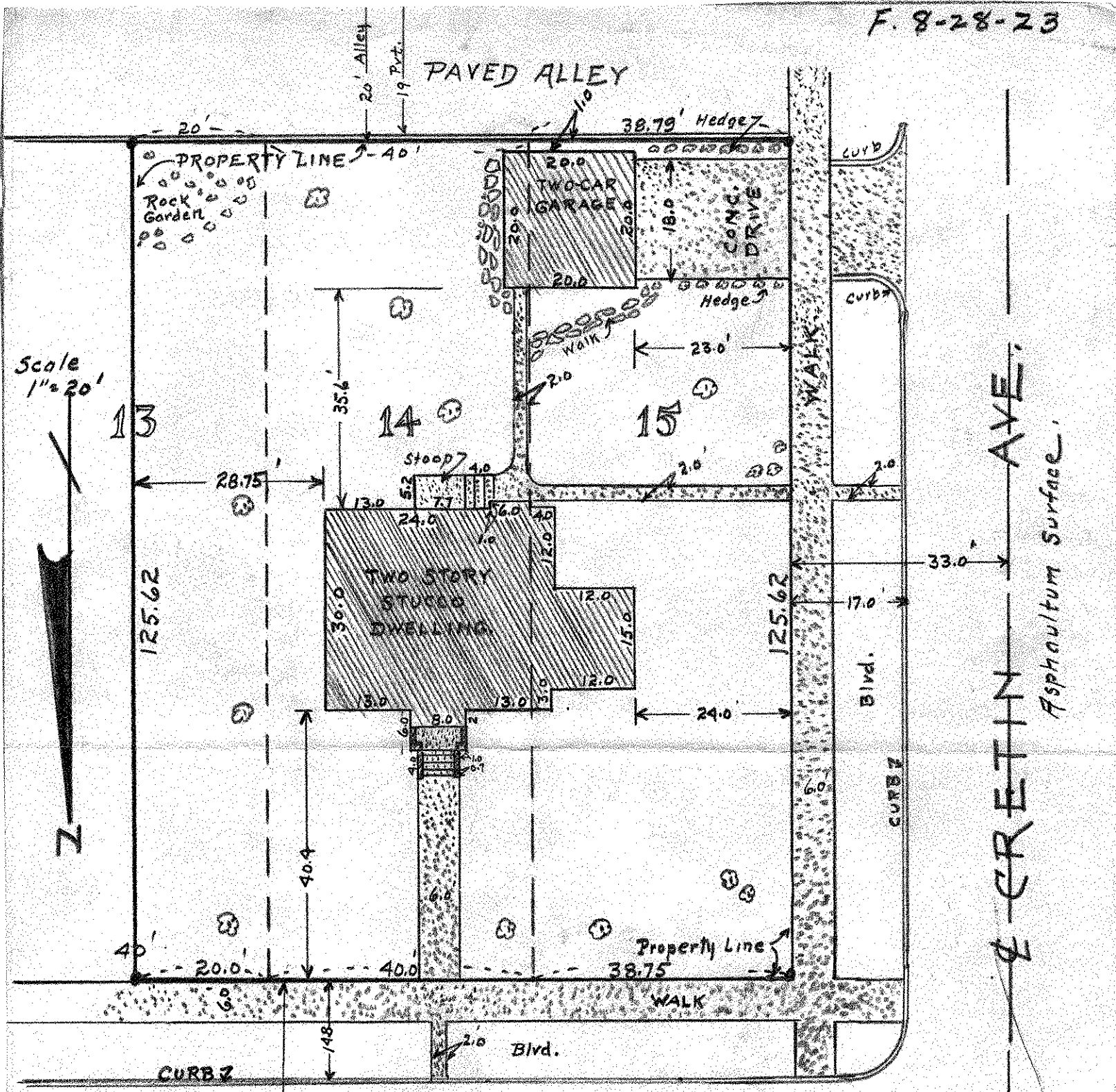


F. 8-28-23



Scale 1"=20'

HOUSE NO. 2174

BERKELEY AVE.  
Paved - Black Top.

This is to certify that the Banister Engineering Co., Registered Professional Engineers, St. Paul Minn., have on this 16th day of October 1936, surveyed the property described as the West 20 feet of Lot 13 and all of Lots 14 & 15 of Block 5 of Loudon Park Add. to the City of St. Paul Minn., and that the buildings and improvements thereon are shown relative to the property lines.

Signed *J. A. Tubino* Banister Engineering Co