

LOT-6, BLOCK-78 - BANNING AND OLIVERS ADD. F-12-28-23

BANISTER ENGINEERING CO.
ST. PAUL
MINNESOTA

HUDSON,
WISCONSIN

ST.

ANNAPOLIS

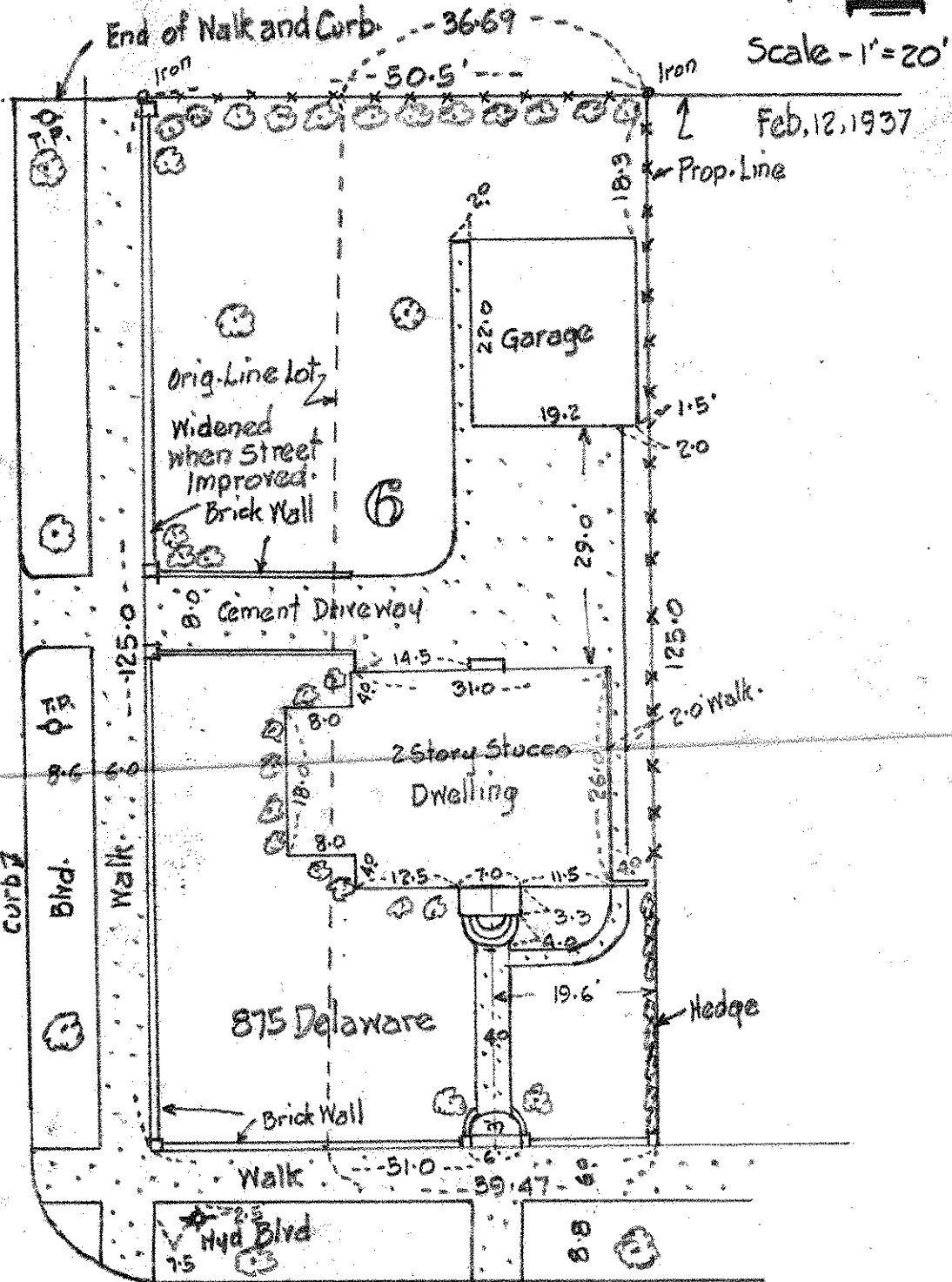
curb

Blvd.

Walk

DELAWARE

AVE.



This is to certify that the Banister Engineering Company of St. Paul, Minnesota, Registered Professional Engineers, have surveyed the property described as Lot-6, Block-78, Banning and Oliver's Addition to the City of St. Paul, Ramsey County, Minnesota, that the improvements as shown on the annexed plat are within the limits of the property described.

Signed

P.R. Banister

Survey for Barta and Rohleder, Realtors.