

# CERTIFICATE OF LOCATION OF GOVERNMENT CORNER

1/4 Corner of Section 9, Township 28, Range 23, \_\_\_\_\_ P.M.

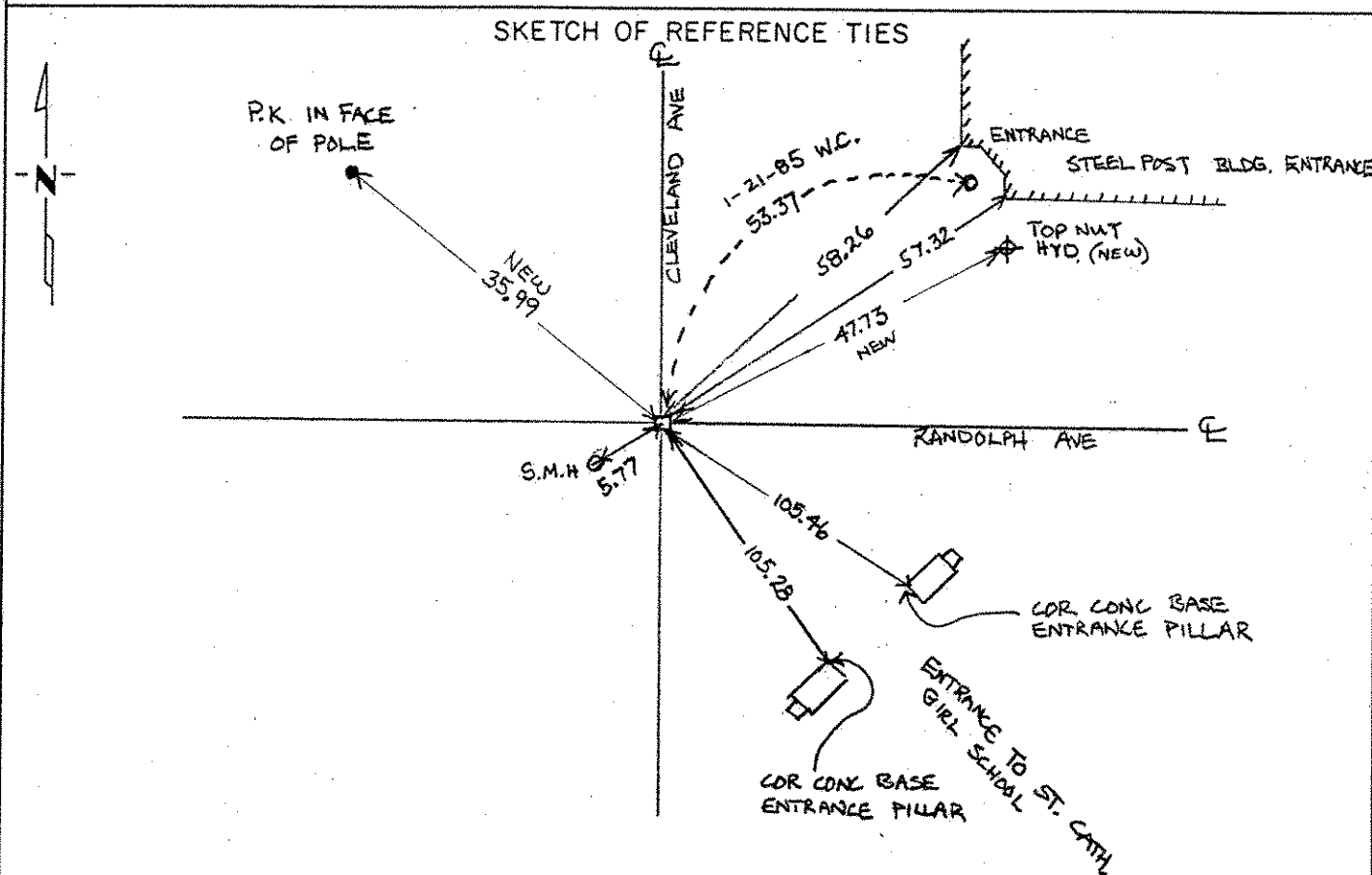
STATE OF MINNESOTA, County of RAMSEY

At the corner location shown on the sketch:

On JULY 29, 1994 found a CAST IRON MON. AT GRADE  
DATE

left monument as found,  lowered monument,  removed monument (explain)

On \_\_\_\_\_ placed a \_\_\_\_\_  
DATE



SKETCH BY: M WASSMAN ON OCT. 3, 1994 FIELD TIES BY: ME, D.N., R.S., BSM 7/29/94

Statement of evidence relative to this corner location is on back of page.

I hereby certify that this document and the data contained herein was prepared by me or under my direct supervision.

\_\_\_\_\_  
SIGNATURE DATE

Registration No. \_\_\_\_\_

Land Surveyor,  Professional Engineer

County Surveyor,  County Engineer

OFFICE OF THE COUNTY RECORDER

County of \_\_\_\_\_

I hereby certify that this document was filed in the Co. Recorders office at \_\_\_\_\_ .M. on the \_\_\_\_\_ day of \_\_\_\_\_ A.D., 19 \_\_\_\_\_

County Recorder \_\_\_\_\_

By \_\_\_\_\_, Deputy

DOCUMENT NO. \_\_\_\_\_